



**20**  
FOURTEEN

upgrade

premium  
residential  
design  
software

**SOFTPLAN**  
ARCHITECTURAL DESIGN SOFTWARE

# SoftPlan 2014 Major Features: Plan Sets

## Plan Sets

Plan Sets provide a convenient, automated method for arranging and organizing one or more drawings or image pages for printing. Customize your own borders and sizing to create integrated construction documents including full page sketches, elevations, cross sections, and even rendered 3D views.

## Rendered Views

Colored, textured, and rendered 3D views can be included in Plan Sets. These views are directly linked to the model allowing the 3D in the Plan Set to update as you develop and modify the model's design.

## Scaled Rendered Views

Colored, textured, and rendered Elevations, Interior Elevations, Cross Sections, and Roof Plans can be added to Plan Sets. These views are added at standard architectural scales for easy reference, including all of the style and material options available, and shadows.

## Drag and Drop

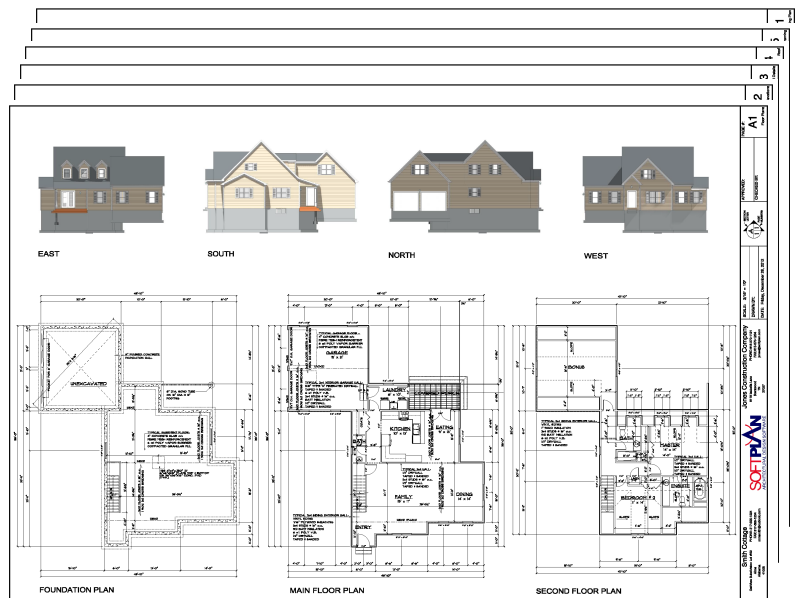
Add a 3D drawing or view to a plan by dragging the file from the navigation window onto the Plan Set sheet. A preview appears as the image is moved into place, allowing for accurate assembly and organization.

## Crop View Tool

Use the Crop View Tool to select a portion of a drawing for display on the Plan Set. The formatted Plan Set remains linked to the source drawing and continues to update automatically as modifications are made.

## Page Numbers

Pages are automatically numbered. Simply drag a page to a new location in the navigation window to renumber.



## Automatic Scaling

As drawings are added, their scales are automatically adjusted. SoftPlan calculates the largest standard scale the allotted space allows, avoiding other drawings and the title block. If necessary, drawings and views in the Plan Set can be quickly edited to a preferred scale.

## Plan Groups

Plan Set sheets can be organized into groups such as Architectural, Mechanical, and Structural. Each group includes its own preface before the sheet number.

## Sheet Sizes

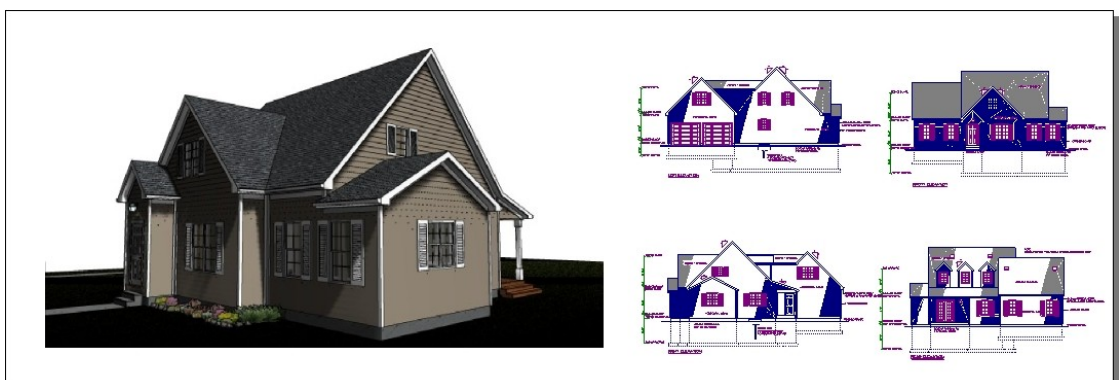
Select sheets from standard page sizes or specify a custom size.

## Title Blocks

The included title blocks automatically scale to the selected paper size, leaving a user-specified border area.

## Watermarks

Watermarks can be automatically added to pages.



# SoftPlan 2014 Major Features: Interface and Interior Elevations

## 64 bit Architecture

The release of SoftPlan 2014 marks SoftPlan's jump to 64-bit capabilities providing access to nearly 2,000 times the memory available in SoftPlan 2012. Users can now take advantage of their modern operating systems and hardware to create entire neighborhoods without the concern of reaching their application's limits. With up to 8 terabytes of usable memory, building large, fully rendered models with several 3D tabs open is no longer cumbersome as SoftPlan 2014's 64-bit application allows fluent mobility around projects of previously unimagined scope.

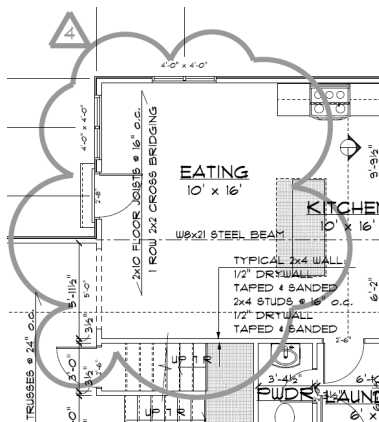
## Interior Elevations

Automatically create straight-on views of kitchens, baths, libraries, or other rooms that require the floor plan information be augmented with the elevation view. The callouts automatically track the plan sheet, elevation sheet, and elevation number.



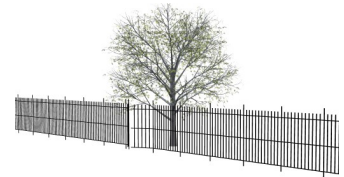
## Revision Clouds

Including revision notes is simpler with the new Revision Cloud command. This feature adds a numbered cloud graphic to the drawing and automatically updates the Revision Schedule.



## Fence

Version 2014 introduces comprehensive fence design. Providing options to set boards, rails, posts, gates, and fence panels, framing the site plan with fully customizable fence work is quick and easy.

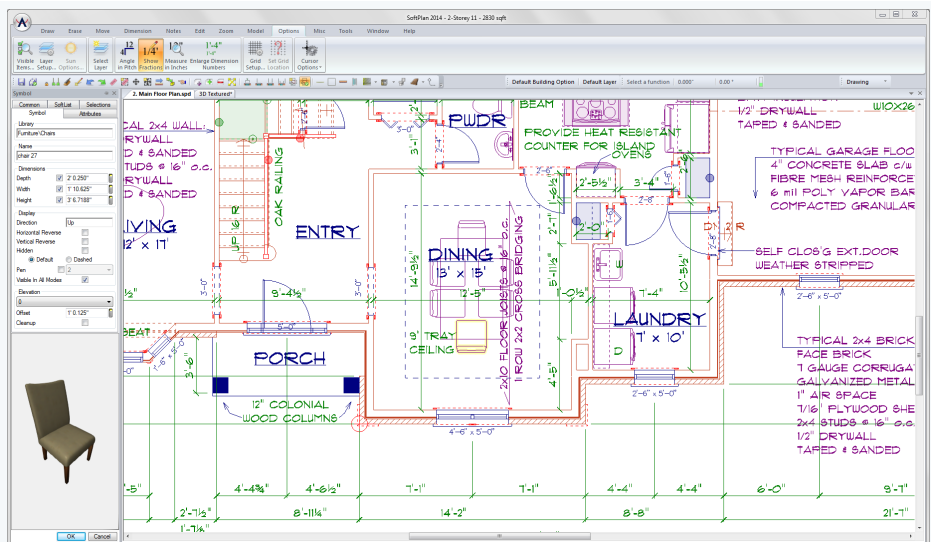


## Enhanced Interface

The interface changes that began in Version 2012 are advanced in Version 2014.

Improvements include Real Time data updates. As changes are made in the edit dialog, the results immediately appear on both the 2D drawing and the 3D model.

The edit dialogs have been reformatted in a skyscraper orientation and automatically roll out over the navigation window preserving the current view of the drawing.

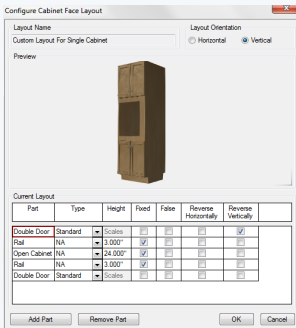


Real Time 3D previews, including rotate and zoom, have been added to all 2D edit dialogs.

# SoftPlan 2014 Major Features: Cabinets

## Cabinets

Cabinets have become a much more prominent fixture in the SoftPlan drawing process as users have established their increasing importance in home design. With many default styles added and the ability to create new ones with ease, SoftPlan 2014 completely redefines its cabinet system to offer unparalleled versatility and customization. Intuitive controls combine with a multitude of new parts and features to provide depth and flexibility in creating gorgeous cabinetry.



### Cabinet Layout

One of the most prevalent updates to Cabinets in Version 2014 is the selection and creation component of cabinet layouts. In addition to a vast library of available cabinet types, a new system allows you to customize dimensions, parts, and face types to create cabinetry of your design. With plenty of room for detail, crafting and modifying a perfect cabinet or run of cabinets is left to the user's imagination. The cabinet parts can be set to a fixed size or set to automatically adjust as the cabinet size changes, helping you reach your desired results.

### Auto Cabinet

- Auto Cabinet Finish & Style synchronized
- Auto Size - a too large cabinet automatically resizes to fit available space

### Cabinet Parts

- Back Panel added
- Built-Up Crown Molding added
- Crown Molding can be automatically added to a Cabinet Run
- Rail & Stile cabinet parts added for custom cabinet creation
- Wheels added as Leg Options

### Cabinet Run

- Backsplash command added
- Show Name option added to Cabinet Run

### Countertop

- Freeform countertop edges edit in 3D
- Hole edges are automatically lined
- Locatable to Snap commands
- Double Oven Cabinets added to libraries
- 2 Doors can be stacked on the same cabinet
- Draw Cabinet automatically recalls the last Cabinet Face selected
- Cabinet placement against angled walls improved
- Elevate Cabinets automatically adds Backsplash
- End Panels can be automatically included
- End Panel Cabinet Type added
- Face Layout - Two drawers side by side over two doors added

### Manufacturers' Library Content:

SoftPlan 2014 contains new or modified library content from the following manufacturers:



### Modification

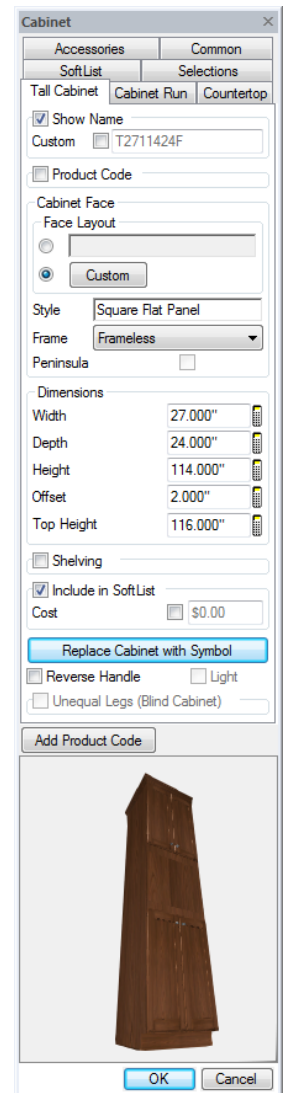
- Face Layout can be modified directly on Edit Cabinet dialog
- Face Layout & Style defaults added to Drawing & System Options
- False option added to any cabinet part
- Reverse Hardware location options added
- Fillers automatically resize to fit available space
- Framing Configuration added to System & Drawing Options
- Hardware displays on the Cabinet preview
- Hardware is positioned relative to the edge of the cabinet door or drawer
- Light Rail added under cabinet
- Rail width can be modified

### Placement

- Draw Cabinet menu no longer tiered, Plan removed
- Manufacturers' libraries display 3D preview
- Matching Layout search added to Select Cabinet dialog
- Open Cabinet part added
- Snap - Cabinets snap back-to-back

### Library Content

- Pantry type cabinet added, tall one-drawer
- Previews display as rendered
- Pull Out Drawer type cabinet added
- Toe Kicks - Individual control added for the sides and back of the cabinet





## 3D

By improving three-dimensional output and reducing rendering time, SoftPlan has once again vastly advanced the quality and speed of 3D design. With customizable options to implement the best settings for a user's system, the freedom to create complex 3D images has never been simpler or looked better.

### Hybrid Rendering

SoftPlan has traditionally used GPU rendering for its speed and CPU rendering for its accuracy. Version 2014 utilizes a hybrid approach in which the GPU is used to increase the speed of renders conventionally created entirely on the CPU.

### Direct-X 11

SoftPlan 2014 employs Direct-X 11 to more fully exploit the computational capability of the latest video cards resulting in faster, more pleasing real time fly-throughs. This improves images in all 3D modes but is most noticeable in Illustrated, Shaded, and Watercolor modes.

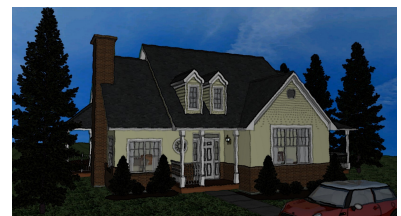
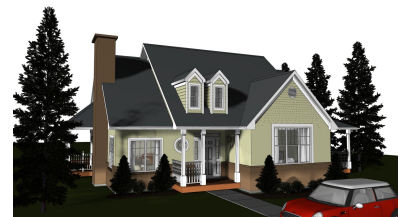


### Improved Memory Model

A more efficient shared memory model allows much faster model generation for the initial 3D view and almost instant creation of subsequent model tabs. For instance, in benchmark tests using common hardware, a 2 million triangle model in Version 2012 takes 1 minute and 30 seconds while only taking 30 seconds in Version 2014, and a second 3D tab takes only 5 seconds rather than almost a full minute. This approach also enables more 3D views to be open without depleting the computer's resources.

### Other 3D Changes:

- Auto Horizon improved
- Billboard symbols cast accurate shadows
- Color Section Tool added
- Neighborhood Extraction Options added
- Quality option for model movement added
- Sloped Beams textures follow the slope
- Textures support the .PNG file format
- Textures can be transparent or semi-transparent
- Reflections improved
- Regenerate added to the right-click on a model tab
- Rotating model displays as shaded or textured rather than wireframe
- Semi-opaque surfaces are transparent as you move around the model in real time
- Undo command includes texture changes



### Manufacturers' Library Content:

SoftPlan 2014 contains new or modified library content from the following manufacturers:



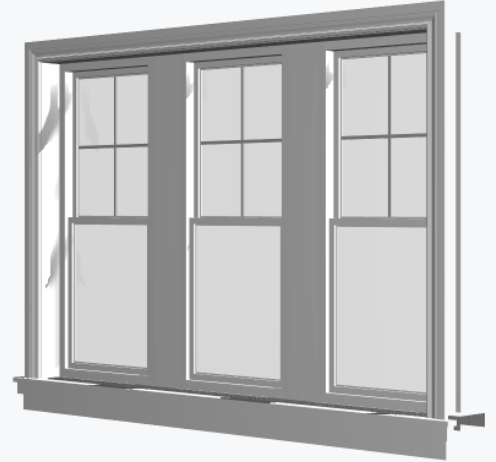
# SoftPlan 2014 Major Features: Openings

## Openings

As in past versions, SoftPlan 2014 continues to deliver extensive improvements to windows and doors as that area of home design becomes more significant with each new release. Openings are easier to place and modify and contain more comprehensive data including expansive libraries for preconfigured items.

### Site Built Units

The largest single change to windows and doors may be the introduction of Site Built Units—openings that are purchased separately but assembled on site into a single framed opening under one header and joined via a wide mullion. These openings display as one unit on the floor plans, framing diagrams, sections, elevations, and 3D models but appear individually on the SoftList report. Site Built Units form automatically when two openings are drawn in close proximity to each other or when one opening is moved to be adjacent to another. When the openings are farther apart, the new Unit Openings Edit command provides the ability to combine them.



### Placement and Modification

- Auto Determine Opening Hinge option added
- Center - Openings already centered on a wall display with the Center option selected
- Bottom of Wall Window Offset option added
- Center on Center Wall Length option added
- Pocket Doors are easier to place
- Hardware display added to Opening Preview
- Resized Openings are automatically set to the nearest inch
- Double Action Swing option added to doors
- Hardware Offset option added



### Trim and Treatments

- Aluminum Sill & Threshold type added
- Blinds - Horizontal & Vertical added
- Trim settings can be set to always default to Options
- Trim Profiles added to System/Drawing Options

### Energy Data

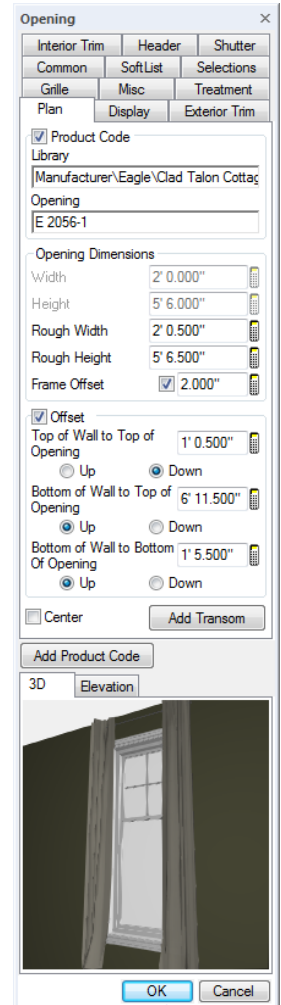
- U-values added to Opening Schedule
- Opening Glazing Type added
- Slab on Grade Insulation properties added
- Window Assembly types exported
- Window Frame Type added

### Construction Documents

- Opening ID Labels option number vs. letter added
- Mask option added
- Display Custom Text option added
- Interior Doors and Exterior Doors have separate door dimension formats
- Interior and Exterior Openings can be excluded from the Opening Schedule
- Door & Window Dimension Format expanded - several formats added
- Header Size Display option added to Drawing Mode
- Header Span Tables include number of plies

### Library Content

- 8' Round Top Door library added
- Awning window library added
- Panel Doors - 2 & 3 panel doors libraries added
- Patio Doors - 96" tall doors added to library



### Manufacturers' Library Content:

SoftPlan 2014 contains new or modified library content from the following:



## Area

- Area Labels added to Character Setup
- Center Line option added to Wall Reference locations
- Schedules include a color column
- Totals list per floor and per project

## Beams

- Cleanup is automatically disabled if the Beam Offset is changed
- Curved Beams control switch added
- LSL (Laminated Strand Lumber) material added
- Sloped Beams can measure offset to either bottom or top of beam

## Building Options

- Building Option Off command added to right mouse click
- Fade option added

## Ceilings

- Aluminum Soffit material added
- Joist Hangers added to Ceiling Joists
- Joist Type added to System and Drawing Option defaults
- Overlay Drawing command added to toolbar
- Style automatically matches the Roof Style above

## Copy

- Openings can be copied to different walls and to different drawings

## Cross Sections

- Room Names can be automatically added to sections

## Decks

- Deck Board Overhang command added
- Parting Board Deck Edge command added
- Posts automatically Adjust Height To Fit Beam when drawn under a deck
- Ring Joist Count option added
- Sister Deck Joist command added
- Skirting command added
- Walls automatically offset to the top of a deck

## Dimensions & Extensions

- Align Extension Start option added to Auto Dimension
- Angle Dimension applies to all visible items
- Auto Dimension option Include Openings added
- Anchor property automatically “locks” the dimensioned items in place
- Arc - Dimension Point locates any point along the length of an arc
- Cross Openings have a unique Extension Option setting
- Dimension Point always uses Snap to locate items
- Garage Doors have a unique Extension Option setting
- Horizontal option added—allows dimension number to always be “read from bottom” regardless of orientation
- Mask option added
- Dimensions that do not fit between their Extension lines are automatically relocated and a curved leader is added
- Edit Dimension highlights the direction to adjust based on where the Dimension is selected
- Relocate Dimension number enhanced - both the new Dimension and the existing Dimension number will move if required
- Rod & Shelf Dimension Option added
- Temporary Dimensions function can be added to the toolbars
- Walls from an Overlay can be used by Set Distance Between command

## Distance

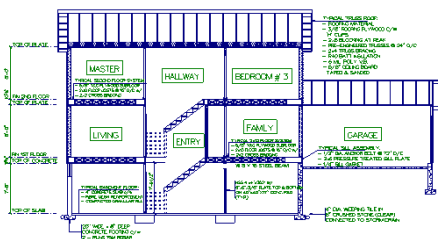
- Leader Line is automatically added when a dimension is moved due to insufficient room for it to display
- Link Floors option available when using Set Distance Between
- Windows shortcut keys CTRL-C, CTRL-V and CTRL-X to copy, paste and cut enabled
- Thin Slash Arrow style added

## Electrical

- Billiard Light added
- Carbon Monoxide Detector added to the standard library
- Contemporary GFI, 220v and AFI symbols added
- Doorbells, buzzers & chimes added to the standard library
- Motion Detector Lights & Uplights added to the standard library
- Spline Connection added
- Symbol Layer option added to definition
- Visa Lighting Sconce Manufacturer library added

## File

- Archive - New Folder command added to Backup
- Checkpoint file is automatically created when the computer goes to sleep
- Close Project automatically returns user to the Project page
- Deleted projects are automatically removed from Recent Projects list
- DWG import improved
- Import AutoCAD 2012 DWG added
- Javelin export added
- Preview added to the Navigation menu
- Project - note field added
- Project - preview image quality improved
- Send to Compressed folder command added
- SoftImage raster file viewer removed
- Sun Options moved to Project Options
- Support removed for TGA Targa files



# SoftPlan 2014 Detailed Features

## Floor System

- Flush Beams automatically added to generated Floor System drawings
- Perimeter status field added to Edit dialog
- Slab Footings are automatically added when Slab Edges are added via Add Polygon Edges
- Slabs can be sloped in garages
- Volume status field added to Edit dialog
- Volume added to Slab Label

## Interiors

- American Clay added to manufacturers textures library
- Area lists on the Edit dialog
- Backsplash Tile is automatically cut by windows
- Baseboard and Chair Rail can be added to Cabinets
- Fillet added to the floating toolbar

## Layers

- Layer Off command added to right mouse click
- Linestyle override added
- No Print option added

## Miscellaneous

- Calculator supports Copy and Paste
- Elapsed Time for entire Project added
- Repeat Edit highlights the source item

## Mode

- Drawing redraw faster after the Mode is changed
- SoftView Mode renamed 3D Mode

## Multi Drawings

- Navigation window - Multi Drawings moved to the bottom
- Spell Check included
- Zoom - each instance of a drawing is saved with its own unique zoom scale

## Move

- 3D - Attach, Group, and Link Floors options added
- 3D - items display as textured when being moved
- 3D - Cabinets will “bump” and “snap” to walls and other cabinets
- 3D - temporary axis markers are improved changing colors to better indicate alignment
- Align to Edge highlights a single edge on an object
- Collision detection indicators added to Sections, Elevations, and Interior Elevations
- Dimension - Right-click near a dimension and the menu contains both Move Dimension Number & Move Dimension Line commands
- Performance improved when moving large numbers of items
- Openings automatically abut each other when moved together
- Openings can be moved from one wall to another

## Notes

- @day Information Stamp added
- @month Information Stamp added
- @plan\_set\_page\_number Information Stamp added
- @plan\_set\_page\_title Information Stamp added
- @property\_area Information Stamp added
- @year Information Stamp added
- Double Box Outline style added
- Date - @Date Information Stamp gets the format directly from the operating system
- No Print notes automatically change color to match the default color of other non-print items
- Notes draw to the screen faster
- Framing IDs (Floor, Roof, Deck, Stair, Ceiling) have separate Visible Item selections
- Framing Labels can be automatically added directly to Roof, Floor, and Ceiling Framing Layouts
- Spell Check added directly on Edit Note dialog
- Title Row added to Tables & Schedules
- Unicode character support added

## Paint

- Coronado added to manufacturers library
- Boral-Cultured Stone added to manufacturers library

## Posts

- Dimension & Extension Options added
- Sizes changed from nominal to actual
- Snap Points added to Post Pads

## Print

- Countertop Texture Pen selection added
- Freeform Countertop uses the Countertop Pen selection
- Rod & Shelf Texture Pen selection added

## Railings

- 3D Preview added to Draw

## REScheck

- Conditioned Floor Space automatically populated
- Door Assembly type Glass vs. Solid exported
- Exclude - items may be excluded from REScheck export
- Opening Glazing Type added
- Slab on Grade Insulation properties added
- Window Assembly types exported
- Window Frame Type added

## reView

- PDF file import added
- PDF export includes overlaid drawings
- Shot Points added to reView files

## Roofs

- Adjust - if a wall is moved, the roof automatically regenerates taking into account the new wall position
- Posts - Roof Edges can reference posts
- Skylight - Frame Thickness option added
- Skylights and Roof Holes added to Type Erase
- Shadow boards added



# SoftPlan 2014 Detailed Features

## Roof Framing

- Truss component widths can be edited individually
- Truss thickness can be edited, used for timber frame trusses
- Valley Sleeper added

## Rooms

- Ceiling Insulation properties added
- Neighborhood House Selection added differentiating rooms with the same names but in different houses
- Masked option added to Room Names
- Room Finish Schedule includes Area & Perimeter columns

## Shapes & Solids

- Conical Frustum added
- Solids - Finishing Options increased to 40
- Style Scale added to all Shapes & Solids

## Site

- Bearing - Zero added to single digit minute & second labels
- Direction of North - Rotate Site option added
- Import GPX file added
- Line Type @grade added to display elevation
- Metric labeled sites can have Imperial dimensions
- Site Options moved to Project Options from Drawing Options
- Retaining Wall added to default Wall lists

## SoftList

- Cabinet Valance Length variable added
- Deck Beams can be counted based on Profile properties
- Footing materials can be calculated independent of Wall materials
- Functions asin, acos, atan, asind, acosd, atand added
- Site Built Unit Openings list the individual components on the materials list
- Taxes - totals are automatically recalculated when rates are changed
- Totals - Multiple Total columns can be added to a single Report

## Stairs

- Align command can use a Stair on an Overlay drawing as a reference edge
- Create Framed Hole command added

## Symbols

- 3D Preview added to Edit Symbol dialog
- Grid Preview added to Draw Symbol dialog
- If a Symbol is set to "cut" a Countertop - the Countertop shading is removed

## Symbol Libraries

- Assembled Symbols arrangements added
- Beds added
- Chairs added
- Chimney Caps - all entries have corresponding 2D & 3D symbols
- Interior Décor Accessories added
- Interior Décor Pictures added
- Landscape Library Mailbox added
- Mechanical Library Tankless Water Heater added
- Plants Library new billboard plants added
- Shrubs Library new billboard shrubs added
- Standard Details added for Brick/Siding, Stone/Brick, Brick/Stucco, Stone/Siding in 4" and 6" framing
- Stools added
- Coffee Tables added
- Dining Tables added
- New billboard trees added
- High Surface Count trees added
- Tropical Trees Library, new billboard trees added
- Vehicles - Mini Cooper added

## Symbol Manufacturer Libraries

- Bilco egress window wells added
- Electrolux appliances added
- Hofberger Design tables, chairs, benches added
- KitchenAid appliances added
- Miele Dynamic appliances added
- Thermadore appliance library added
- Thos. Moser furnishings added

## Tools

- Cursor Snap Grid renamed Cursor Movement Grid
- Offset Tool added to right mouse click on a line or polyline based item
- Walls introduced by the Chamfer command match the height and offset of the source

## Type Erase

- Locked Layers do not appear on Type Erase selection

## Walls

- Change Wall command highlights all the walls that will be changed
- Dimension and Extension location preview added to Wall Definition dialog
- Splash Board added to Trim options
- Trim & Corner Board can be added to the same wall
- Wall Texture added to Visible Items

## Wall Framing

- Girder Trusses are automatically supported by Studs
- Beam intersect locations indicated on generated Wall Panel diagrams
- Cripples - automatically added cripples can be erased

## Zoom

- Cursor movement much smoother when zoomed in tight

*\*Product names, logos, brands and other trademarks referred to within SoftPlan Systems, Inc.'s products and services and within this brochure are the property of their respective trademark holders.*



SoftPlan+ is a subscription-based facility that enriches the design process by providing the user with a suite of cloud services and up-to-date knowledge of everything SoftPlan has to offer.

Take advantage of enhanced technical support, access to exclusive content, the complete training library, and the SoftPlan+ online cloud drive that makes sharing your projects across multiple locations easier.

## Data

### Cloud Sharing



SoftPlan+ saves the most recent copies of your projects to the SoftPlan+ cloud drive. With your SoftPlan key and a high speed internet connection, you can continue working on your project from a different system.

The new SoftPlan reView extensions also allow you to publish your documents for customer viewing, including 2D vector drawings and rendered panoramic views. Customers can also make notes on the vector drawings and any changes appear automatically the next time you open the project.



## Enhanced Technical Support



### Toll Free Number

Reach SoftPlan's technical support team with the SoftPlan+ toll free number to receive personalized assistance.



### Integrated Support Tickets

Providing streamlined support, SoftPlan+ includes the ability to submit a support ticket directly through the SoftPlan+ interface. SoftPlan then gathers all the files of your project and makes a copy available to the SoftPlan support staff who can then review your project and provide the appropriate feedback and files you need to address the issue.



### Command and Control Support

With permission, SoftPlan+ support technicians have the ability to take control of a SoftPlan+ subscriber's computer for advanced assistance.

## Training



### Online Training Content

When using SoftPlan, the complete training library is accessible for viewing. As content is added to the training library, it is made available immediately to SoftPlan+ subscribers. The training content currently totals over 60 hours.

\* All SoftPlan+ features require a high speed internet connection.

\*\* Command and control support sessions are initiated at the discretion of the technician.

## Customer Interaction

SoftPlan+ provides an entirely new level of customer interaction that facilitates communication so that the customer is always up to date. This efficient system of interaction gives the customer the ability to view your designs in 2D plans and 3D models, from a PC or an iOS device of their choice, and to supply input in a collaborative process unique to SoftPlan.



### reView

All reView functionality is available through SoftPlan+ including the authoring of reView & PDF files.



### Panorama Views

Automatically generate panoramic views from predefined points to experience the model in fully immersive 3D on PC, iPhone, or, most impressively, iPad.



### iOS iPad and iPhone

SoftPlan+ allows Apple iOS support for the iPad and iPhone so users can access their work from anywhere. Mark up drawings, add notes, and take a virtual tour of a house in full, panoramic 3D, all from the convenience of your Apple iOS device.

## SoftPlan Version



### Never Pay for an Upgrade Again

SoftPlan+ subscribers have no cost access to the latest version SoftPlan has to offer. Receive all of SoftPlan's time saving enhancements as soon as an updated version is released.

## Premium Content

SoftPlan+ subscribers have access to additional content that is stored on the SoftPlan+ cloud server and can be updated and augmented at any time.



### Enhanced Textures

SoftPlan+ texture libraries include enhanced hardwood flooring and manufacturer offerings from Avonite, Boral, Ceasarstones, Corando, Eldorado, Ice Stone, Owens Corning and others.



### Enhanced Libraries

SoftPlan+ symbols libraries include new libraries of Kitchen Accessories, Beds, Stools, Lights, Office Furniture, Range Hoods, Chaise Interior Décor, Tables, Dressers, Wardrobes, Entertainment Consoles, Credenzas, Sectionals, Benches, Ottomans, and Bathroom Furniture.

Manufacturers' Libraries includes content from the following manufacturers:



TECH LIGHTING



SoftPlan Systems, Inc.  
8118 Isabella Lane  
Brentwood, TN 37027

phone: 800-248-0164  
fax: 615-370-1204  
email: [sales@softplan.com](mailto:sales@softplan.com)  
web: [www.softplan.com](http://www.softplan.com)

