

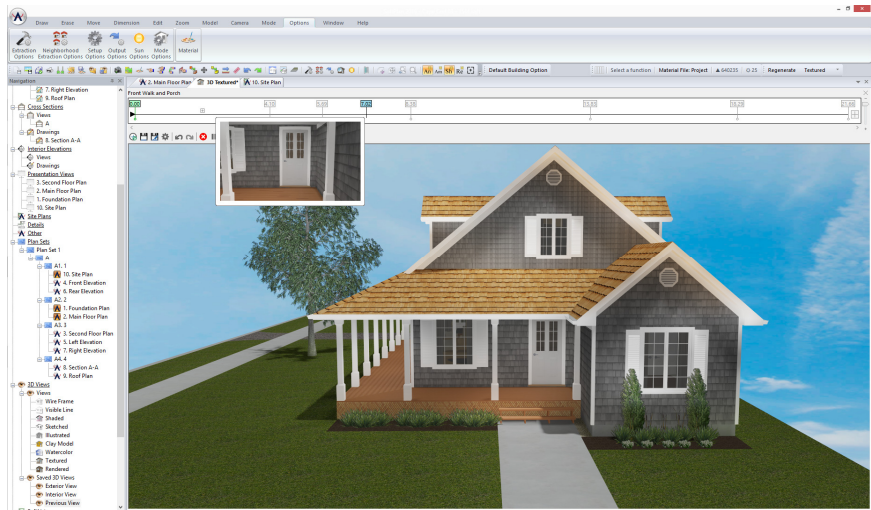


technologically
advanced
residential
design
software

2016

SOFTPLAN
ARCHITECTURAL DESIGN SOFTWARE

SoftPlan 2016 Major Features: Walkthrough Animations



Walkthrough Animations

With this release, SoftPlan introduces a new feature that allows you to create custom walkthrough animations by capturing camera movements you make in the 3D model or in one of SoftPlan’s various 3D views.

These walkthroughs are easy to create, easy to modify and easy to distribute.

Create compelling videos for your clients or prospective clients.

SoftPlan automatically adjusts the views so you walk up or down stairs.

Each recorded movement becomes a frame on the timeline, building an animation that can be played back and saved. Add, remove, or modify frames using the timeline’s editing tools and output settings to create detailed walkthrough presentations.



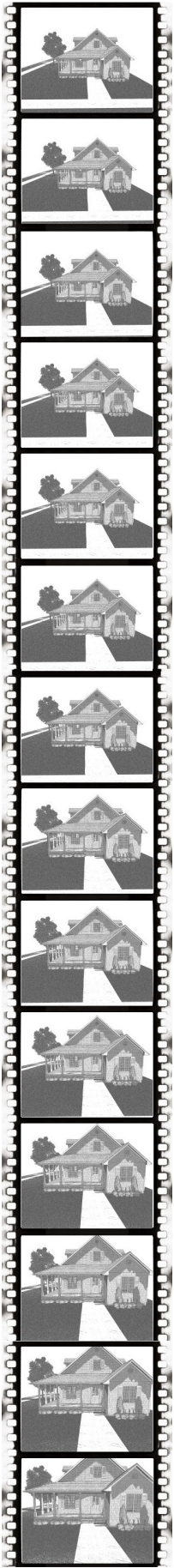
Post Walkthroughs Directly to YouTube

One of the most problematic concerns for anyone trying to move or share a computer animation is the enormous file size. If you are a SoftPlan+ subscriber, SoftPlan allows you to add a title and description to an



animation video and then upload it directly to YouTube to share with your colleagues and clients.

** YouTube Export is only available to SoftPlan+ subscribers.*



SoftPlan 2016 Major Features: 3D



Automatic Presentation Views

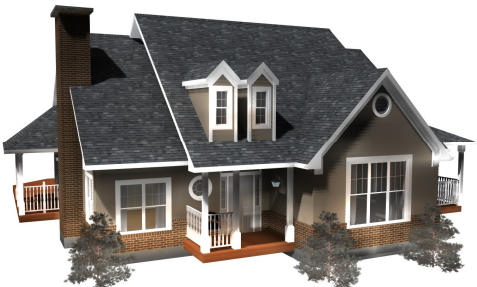
With a click of the mouse, you can quickly generate Presentation Views from floor plans found in the Model list. Presentation Views provide a top-down view of the drawing in 3D and can be generated in any of SoftPlan’s 3D modes. Similar to other 3D views in SoftPlan, Presentation Views can be saved as SoftPlan drawings and detailed with paint and construction notes. Presentation Views can also be added to Plan Set Pages and printed along with your other floor plans, 3D images, and construction drawings.

HDR Tone Mapping

When the Tonal Mapping option is checked, SoftPlan uses an HDR (High Dynamic Range) to perform more detailed lighting calculations and then applies Tonal Mapping techniques to convert that image to one appropriate for display on computer monitors and printing. This causes images that would normally appear washed out to have more pleasing lighting variations.

Gamma Correction

Gamma correction is a technique used to correct the way images display on monitors. When applied, it yields a brighter looking image.

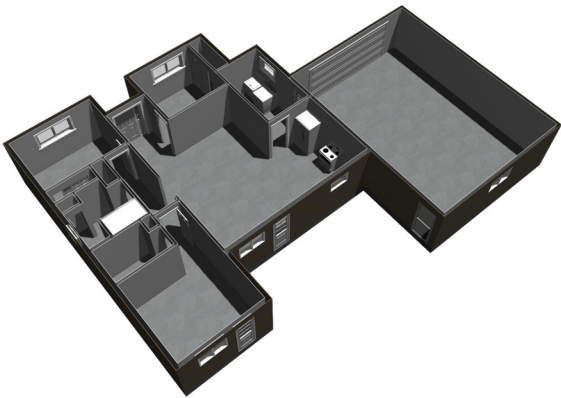
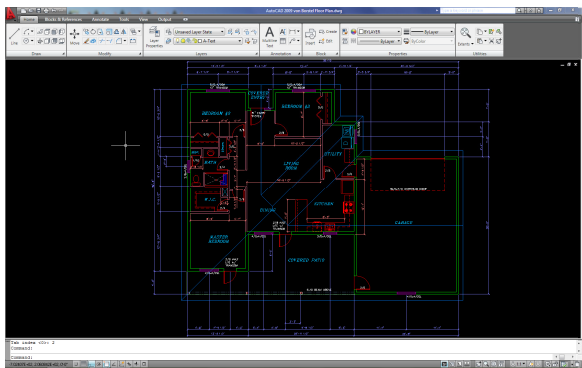


Indirect Lighting

Indirect Lighting is light that reflects off surfaces onto surrounding objects to produce a more realistic image.

Direct Contribution and Indirect Contribution sliders allow you to choose how much direct and indirect light you want to blend into the final image.

SoftPlan 2016 Major Features: AutoCAD files to SoftPlan, SoftPlan 3D to SketchUp



AutoCAD to SoftPlan Conversion Wizard

The AutoCAD to SoftPlan Conversion Wizard offers an unprecedented level of convenience for importing DWG and DXF file formats into SoftPlan.

Import a single drawing, multiple drawings, or an entire project by following a series of easy steps to convert simple lines into walls and other SoftPlan items.

Once you have selected a file to convert, SoftPlan creates a preview tab that automatically updates as you work. You can then choose which AutoCAD layers to import and how to import them, change wall lines into the wall types you want to use, cleanup wall generation issues, and convert imported symbols into SoftPlan symbols and openings.

In minutes, take a “flat” two-dimensional AutoCAD drawing and convert it into a SoftPlan three-dimensional “BIM” drawing complete with walls, doors, windows and symbols.

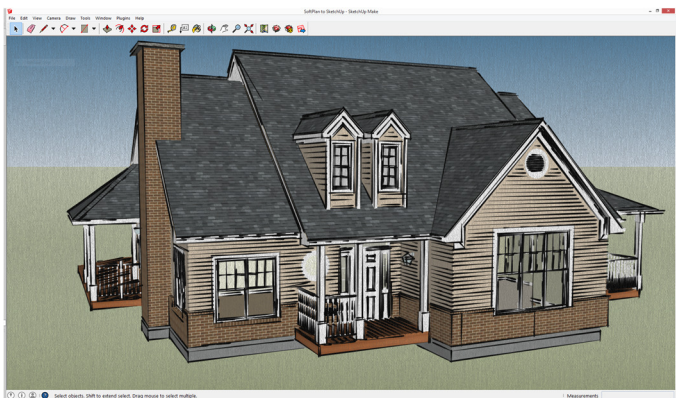


SketchUp Export

With the ability to export models into SketchUp, SoftPlan 2016 offers even more room to realize the 3D presentations you envision while designing.

The quick and simple export process into SketchUp enhances your rendering capabilities by expanding the modeling options you have at your disposal. With the ease of use of both SoftPlan and SketchUp, you'll be able to achieve unique renderings with minimal effort.

** SketchUp Export is only available to SoftPlan+ subscribers.*



5



5

5

5

5

5

5

5



5

5

5

5

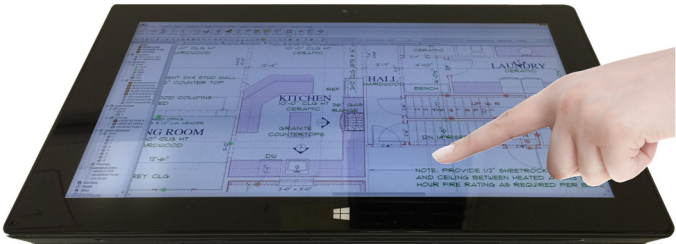
5



SoftPlan 2016 Major Features: Touch Support, Google Earth, 3Dconnexion Mouse and Dentil Molding

Touch Support

This release introduces SoftPlan Touch support. With a touchscreen monitor or Windows tablet, SoftPlan’s drawing actions are completely available at your fingertips.

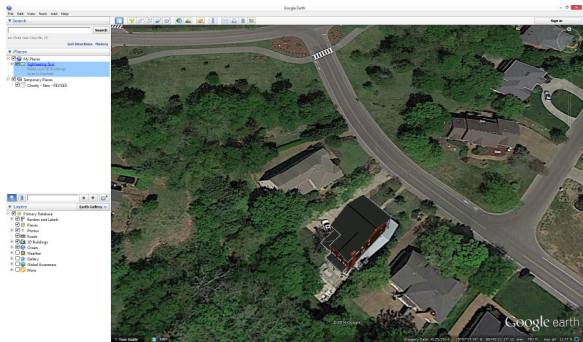


Using touchscreen movements such as pan, zoom, and drag and drop, SoftPlan’s touch capabilities allow you to create content from the convenience of your office or on the go. SoftPlan’s intuitive touch interface facilitates quick sketching by automatically panning where your finger goes and using drag and drop item placement.



Google Earth Export

SoftPlan 2016 allows you to export a project’s site information, such as latitude, longitude, and direction of North, to create a Google Earth file. You can then open this file in Google Earth to display a satellite image of the property, create tours and save specified views as jpeg images.



* Google Earth Export is only available to SoftPlan+ subscribers.



3Dconnexion 3D Mouse Support

SoftPlan 2016 supports 3Dconnexion® 3D mice. Users can simultaneously pan, zoom and rotate 2D/3D content while the standard mouse remains free to select menu items or parts of the model.

Dentil Molding

New capabilities added to the profile tools in SoftPlan 2016 enable you to create dentil type molding that greatly enhances the realism of the 3D model.

Dentil molds can be created for such interior profiles as crown molding, chair rails and crowns on the tops of cabinet runs.



SoftPlan 2016 Major Features: Plan Sets



Plan Sets

Plan Sets were introduced in SoftPlan 2014 as a way to provide a convenient, automated method for arranging and organizing one or more drawings or image pages for printing. SoftPlan 2016 builds significantly onto this feature making Plan Sets an even more powerful time-saving tool.

Plan Set Templates

Plan Sets that you create can be saved as templates for future use. Plan Set Template files save the pages you created for the Plan Set and other attributes you specified such as the page size, border, watermark, and margins.

The next time you wish to use a similar arrangement of drawings and pages, simply recall the template. SoftPlan will automatically create all of the pages and place the appropriate drawings for the new project on the sample page used in the original project.

Quickly swap out template drawings for current project drawings to expedite the printing process.

Auto Label

Labels showing Drawing Name and Scale are automatically added to the Plan Set when a drawing or view is added. These automatic labels can be edited for content, font, and size, and can be relocated and turned on or off.

This feature eliminates the need to add a “MAIN FLOOR PLAN” type note to a drawing ever again.

Print

Individual pages and page ranges can be sent to the printer.

Building Options

Multiple Building Options can be displayed on a single plan set. This makes it easy to display a plan and the options for that plan on the same sheet.

Export

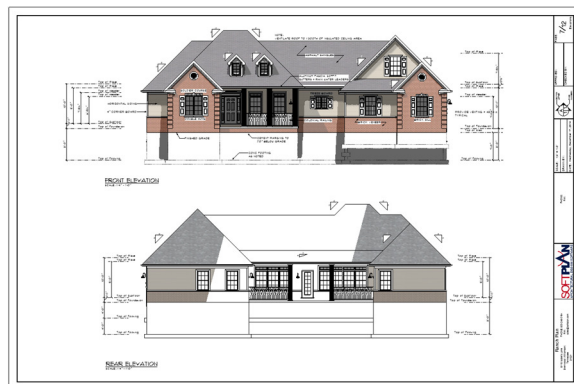
DWG/DXF export added to Plan Set Pages.

Schedules

Revision Schedule and Drawing Schedule (Table of Contents) commands added.

Other Changes:

- 3D Views—Regenerate added to right-click menu
- Draw Select added
- Crop View command added to right-click menu
- Erase Drawing or View added to right-click menu
- Export of rotated drawings improved
- Font Options added for Drawing Name and Drawing Scale
- Import Image added
- Missing drawing notification added
- Prefix added to Groups, used in place of the group name when numbering pages
- Print added to the toolbar
- Rename added to right-click menu



SoftPlan 2016 Detailed Features

3D

- 3D Notes added

1979 Chestnut Avenue

- 3D Zoom Speed option control enhanced
- Adjust added to toolbar
- Animation outputs to .WMV format by default
- Anti-Aliasing levels increased
- Banding can be adjusted
- Camera displays the circular path for Camera
- Clay Model 3D mode added
- Collision detection indicators are easier to see
- Draw Profile 3D preview added
- Draw Select added
- Edit Surface dialog enhanced
- Eyeball navigation improved
- File Save Images defaults to .JPG
- Frame Rate added to screen animations as a way to control playback speed
- Go To Room command allows room selection with a double-click
- Separate Joist materials added
- Opacity override option added to Face Options, controls semi-opacity for all surfaces
- Rotate Camera around Focus command added to the 3D View window
- Rotate Focus around Camera command added to the 3D View window
- Stairs automatically adjust the Camera and the Focus so when moving in 3D you effectively walk up or down the stairs
- Time Stamp option added to Sun Study
- Texture Load renamed to Load Preconfigured Material
- Texture Scale override added to Face Options
- Turning a material off/on included in Undo/Redo
- Zoom in/out on focus added, hold down right mouse button while moving via wheel or arrow keys

Building Options

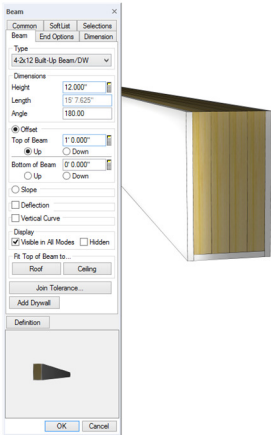
- Building Options moved under Project Options
- Comment field added
- Current sort order saved
- Dialog size holds session to session
- Groups added
- Items can be included in multiple Building Options
- Multiple Building Options can be displayed on a single plan set
- No limit on the number of Building Options
- Pasted items are automatically placed on the current Building Option

Area

- Area Labels added to Visibility options
- Area Labels can be moved
- Printing of shaded areas improved
- Project Information can automatically calculate the Gross Floor Area
- Round Area to Nearest Unit option added

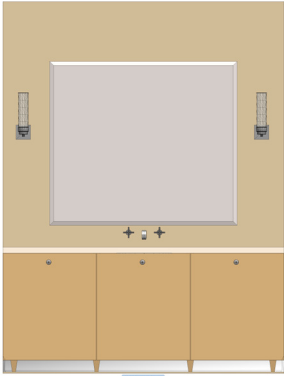
Beams

- Add Drywall command automatically wraps beam with drywall
- Beams on the drawing are listed at the top of the Draw Beam dialog
- Beam Shading added to Visible Items Options
- Deflection option added allows beam to be curved in plan view
- Dialog width increased to display full name
- Drag & Drop sorting added to Beam Definition
- Draw Beam dialog stays on screen so different Beam Types can be selected without starting the command again
- Dynamic preview added when drawing/adjusting



Cabinets

- 1/4 Round shape added
- Armstrong manufacturer libraries added
- Cabinet height can be adjusted in 3D, Interior Elevation and Section
- Countertops can be set to Print by default
- Hardware can be added to center of the door
- Narrow Cabinets (<=21\") default to a single door, Wide cabinets (>21\") to a double door
- Select Cabinet layout logic improved
- Shelves can be added to 1/4 and 1/2 round end cabinets
- Wall Cabinets, 42\" added to default heights



SoftPlan 2016 Detailed Features

Ceilings

- Armstrong manufacturer libraries added
- Ceiling Hole edges look improved in 3D
- Grid and Tile ceilings extract in 3D
- Ceiling will move up and down in 3D and section
- Insulation extracts in the model
- Radius Bulkheads added

Copy

- Distance field added allows items to be precisely copied

Dimensions & Extensions

- Arrow Style options added to instance level
- Dimension line automatically extends to the first dimensionable item in each direction
- Dimension Options toolbar shortcut available
- Dimension Text added to Repeat Edit
- Edit Dimension requires fewer keystrokes
- Dynamic preview added
- Instance level Dimension Options added to Walls and Beams
- Placement of dimension numbers when using Accumulate improved
- Posts have Dimension & Extension options

Distance

- Distance command utilizes Perpendicular Snap
- Grouped items added
- Selection Set items added
- Railing Edge and Post added

Decks

- Decks can reference framing rather than finish material on a wall
- Dynamic preview added when drawing or adjusting Deck Beams
- Top of Banding offsets to top of Decking
- Joist Hanger option added
- Posts snap under beams
- Railing Style automatically recalled
- Solid Surface (plywood) option added
- Steel Framing option added

Electrical

- Ceiling and Floor Outlets added
- Connect Texture renamed to Connect Linestyle
- Exit Lights, ceiling and wall added
- “Jumps” added to the arcs when Electrical Connections cross
- Lights automatically added to a Room
- Wall Lights added

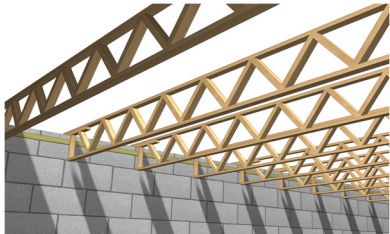


File

- Close All command added
- Copy Project command added
- Curved Notes export to AutoCAD .DWG files
- Icons added to tabs for easier identification
- Images added to DWG and DXF exports
- Import path is recalled on subsequent imports
- Google Earth Export added
- Navigation Groups underlined, easier to read
- PDF export command updated
- Remove from Recently Opened List command added to the right-click of a project
- Search Projects command added
- Send To automatically creates a Bound Drawings folder for system drawings & details

Floor System

- Beams can display shaded
- Curved Beams (Plan View) added
- Insulation extracts in the model
- Joist Hangers can be made visible in Plan & 3D
- Joist Spacing for First Joist can be different than other Joist Spacing
- Slab insulation thickness can be specified
- Slabs with recessed edges display a solid line to indicate the depression
- Subfloor area excludes any holes in subfloor



- Drop Cord Truss added
- Walls above the floor and below the floor system can be displayed

Interiors

- Assign Color option added to System/Drawing options
- Interior Labels can be moved
- Finishing options increased to 100

SoftPlan 2016 Detailed Features

Layers

- Comment field added
- Current sort order saved
- Dialog size holds session to session
- Pasted items are automatically placed on the current layer
- Set Distance Between command can access items in a locked layer

Miscellaneous

- Drawing Options: Reset to System Options command added
- Elapsed Time counts for entire project
- Partial Erase dynamic preview added
- Miscellaneous Colors assignment replaced with individual settings for: Truss Set, Table, Truss, Bridging, Profile Post, Profile Wall, Profile Beam, Profile Opening, Rafter, Drawing Item Hole, Ref Point In Symbol, Ceiling, and Profile Zero Line
- Rod & Shelf, Center Panel option added

Multi Drawings

- Export of rotated drawings improved

Move

- Area Labels can be moved
- Center in Room command added
- Center Between Edges command added
- Interior Labels can be moved
- Rotate Item indicates the center point of the rotation

Notes

- 3D Notes added
- Beam Schedule command added
- Cleanup automatically regenerates a schedule
- Copy & Paste between SoftPlan Tables (Schedules) and Excel spreadsheets added
- Curved Notes export to AutoCAD .DWG files
- Drop Shadow option added to Tables
- On screen appearance improved
- Pointer Notes default to Detail Note type
- Regenerate added to right-click on Schedules
- @pg# Information Stamp added
- @T#PGS Information Stamp added (total plan set group pages)
- @#PGS Information Stamp added (total plan set pages)
- Revision Polygon command added
- Schedule, drag & drop reordering of columns and rows added
- Table Column width can be increased
- Takeoff Schedule added
- Underline option added to cells in a Table

Openings

- 8' Patio Doors added to library
- Deflection option added to quickly change a window to an arch top
- Draw Door Leaf Solid option added



- Eagle library updated
- Garage Door Bucks option added



- Integrity All Ultrex Round Top libraries added



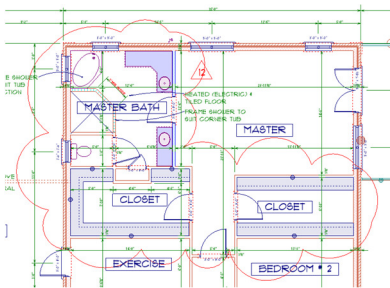
- Jeld-Wen Aurora exterior doors, Custom Wood Contemporary doors, Custom Wood Entry doors libraries added



- Kolbe library updated
- Marble Sill Type added
- Niche Opening Type added
- Opening Text Options for Interior vs Exterior are separate
- Opening Textures improved on thick walls if interior & exterior trim are different materials



- Pella Architect Series libraries added
- Plantation Shutters (4 section) Opening Treatment added
- Sills default to a Stool & Apron style
- Solar Heat Gain Coefficient (SHGC) added
- Triangle Window added
- Trim on multi-material walls improved
- U-value option added



SoftPlan 2016 Detailed Features

Paint

- Coronado patterns updated
- Opacity option added to Solid Paint
- Paint Break located under Draw > Paint
- Shade Break located under Draw > Paint
- Spline shaped Electrical Connections no longer block Paint

Posts

- Block, Brick & Concrete textures added to plan view
- Larger Post Cap Symbols added
- Maintain Aspect Ratio option added to Edit
- Offset command applies to Posts
- Repeat Edit changes both Height and Offset

Print

- Door Leaf can print solid
- Individual Plan Set pages and page ranges can be sent to the printer
- Zoom can be used while positioning the Print window

Railings

- Posts miter to underside of railing
- Post Styles reworked, Flat replaced with No Post, Corner replaced with Center on Rail, Flush replaced with Flush to Rail



- Spindles of different styles can alternate on the same railing

REScheck

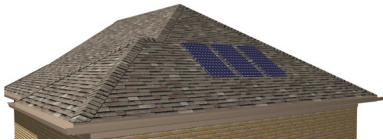
- SoftPlan Project Information automatically added to REScheck
- Solar Heat Gain Coefficient (SHGC) added
- U-value option added

reView

- Email option added to PDF Export
- Export Options are remembered/recalled for the current session
- Password reset option added
- Previously used email addresses are stored/recalled for subsequent publication
- PDF imports display in exported file

Roof

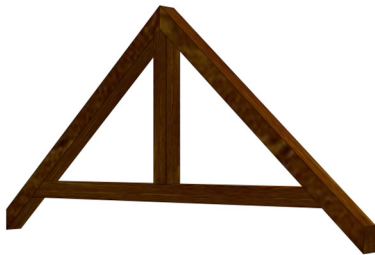
- Auto Roof improved
- Color override added to Roof in plan view
- Display Roof Outline Dashed added to Visible Items
- Dutch Gable Overhang value added
- Dynamic preview added
- Frieze Board placement improved



- Solar Panel command added
- Walls can be edited from Roof Mode

Roof Framing

- Drop Cord Truss added
- Counter Brace can be added to a Truss Set
- Gable End Ladder added
- King Post Truss added
- Outriggers added
- Rafter Width option added
- Truss Width option added



Rooms

- Draw Room dialog increased in size
- Font size override added to individual rooms
- Lights automatically added to center of a Room
- Room Properties dialog increased in size
- Rotate option added, displays label vertically

SoftPlan 2016 Detailed Features

Shapes & Solids

- Arrow Size limit increased to 999
- Arrow placement on arcs improved
- Center of arcs display as a non-print item
- Linestyle selection added to toolbar for Arrows & Spline Arrows
- Opacity slider added to solid textured shapes and solids allowing them to display shaded
- Polygons can contain both Spline sections and straight sections
- Polygons Undo one segment at a time
- Snap point added at intersection of two circles

Site

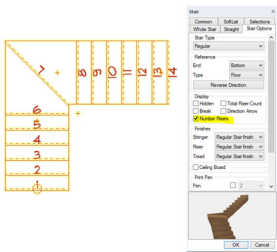
- 4' tall fence definitions added
- Fences fit to Site Grades with a negative offset
- Fence Gate width option added
- Shot Points can be extensioned & dimensioned
- Snap point added at Wall/Site Line intersections

SoftList

- Banding Material added
- Ceiling Perimeter variable added
- Gable End Frieze added
- Gable Vent Trim added
- Opening groups aluminum_sill & marble_sill added
- Project Information can be automatically added to the top of a report
- Roof Areas at different pitches will report separate areas
- Site group fences count
- Subfloor Area excludes holes for Stairs
- Stair group deck_finish added
- User Defined Variables can be specified as a list
- Valley Sleepers added
- Variables added for wall inside/outside corners

Stairs

- 42" wide stairs added to libraries
- Closed Stringers display in plan view
- Head Clearance defaults to 6'-8"
- Pen Settings added
- Railings can extend past the Post
- Risers can be automatically numbered in plan view
- Round Nosing possible with plumb riser
- Spindles can extend down lower than the treads
- Stringer Width option added

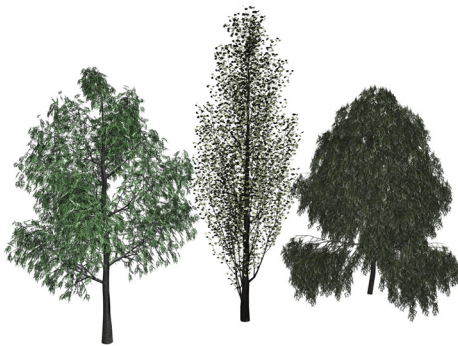


Symbols

- Maintain Aspect Ratio option added to Edit
- Pen option As Defined added
- Preview is larger and clearer
- Symbol search pane is larger
- Symbol Selection dialog remembers/recalls size
- Symbol previews use menu color as a background for higher contrast
- Symbol Tags added
- Slopes with Reference option added—causes symbols to follow the plane they are sitting on

Symbol Libraries

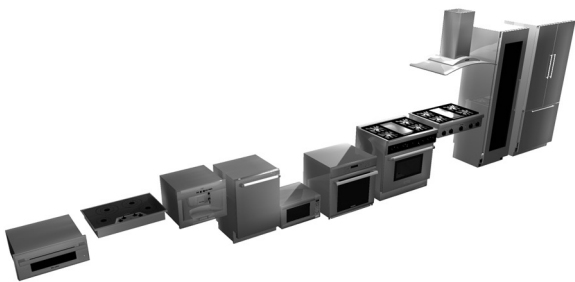
- Air Conditioner-wall hung added
- Opening Jamb details added
- Paint added to plant, tree, shrub & vegetation 2D symbols



- High Surface Count trees added

Symbol Manufacturer Libraries

- Benito children's play sets added
- Osborne Wood Products pilasters, panels, corbels and brackets added



- Thermador refrigerators, coffee makers, cooktops, dishwashers, freezers, microwaves, ovens, ranges, range tops, ventilation, warming drawers, wine columns added
- True appliances added
- WindsorOne millwork added



SoftPlan+ Symbol Libraries

- Armchair added
- Bathroom Accessories: metal shelves & towel bars added
- Bunk bed added
- Chairs added
- Contemporary Coffee Tables added
- End Tables added
- Exterior Lights added
- Exercise Bench added
- High Surface Count Trees added
- Kitchen Accessories, teapot added
- Loveseats added
- Office Furniture, shelving added
- Outdoor Furniture, chair, bench, chaise lounges added
- Televisions added
- Room: Bathroom added
- Room: Bedroom 5 arrangements added
- Room: Dining 3 arrangements added
- Room: Office added

SoftPlan+ Manufacturers Content



- Barlinek hardwood flooring added



- Knoll barstools, chairs, tables, lounge seating, office seating and café seating added
- Johnsonite flooring added
- Sloan hand dryers added
- TruStile doors added
- Trex decking added

Tools

- Adjust, dynamic preview added
- Extend acts on items within a Selection Set
- Trim - dynamic preview added

Type Erase

- Drawings in Model option added, removes items from all floors in the model
- Revision Clouds added

SoftPlan 2016 Detailed Features

Walls

- Board & Batton siding will fit to Soffit
- Corner Boards added to Board & Batten walls
- Drag & Drop sort added to Wall Definition dialog
- Draw Wall dialog stays on screen so different Wall Types can be selected without starting the command again
- Dialog width increased to display full name
- Drywall automatically caps the exposed end of an interior wall if displayed in plan
- Dynamic preview added when drawing or adjusting Walls
- Footings added separately to Visible Items
- Footing can be dimensioned
- Frieze Board placement on walls with small jogs improved
- Wall Insulation extracts in the model
- Glass Block wall added to Extended Wall List
- Log Wall joins improved
- Textures (plan) double-line and long short added
- Quoins run continuous from floor to floor on the 3D model
- Walls on the drawing are listed at the top of the Draw Wall dialog

Wall Framing

- A single Wall Panel drawing can be generated for all floors in the house
- Blocking on Double Stud walls improved
- Color assignments added for individual framing components
- Double Window Sill Plate option added
- Framed wall glass wall intersections improved
- Garage Door Bucks option added
- Separate default Styles added for bearing and non-bearing walls
- Shear Panels added
- “U” corner frame style added

Zoom

- Zoom Center & Corner shading indicator added
- Double-clicking the middle mouse button performs a Zoom Extent
- Undo includes the zoom state

SoftPlan+



- Custom Symbols and Textures used in a project automatically backup to the SoftPlan+ server
- Status indicator added when accessing the SoftPlan+ server
- email address added under Project Information automatically lists as email address when publishing

SoftPlan+ cloud drive and services



SoftPlan+ is a subscription-based approach to using SoftPlan that enriches the design process by providing the user with a suite of cloud services and up-to-date knowledge of everything SoftPlan has to offer.

Take advantage of complimentary upgrades, enhanced technical support, access to exclusive content, the complete training library, and the SoftPlan+ online cloud drive that makes sharing your projects across multiple locations easier.

Cloud Sharing

SoftPlan+ saves the most recent copies of your projects to the SoftPlan+ cloud drive. With your SoftPlan key and a high speed internet connection, you can continue to work on your project from a different system installed with SoftPlan.

The new SoftPlan reView extensions also allow you to publish your documents for customer viewing, including 2D vector drawings and rendered panoramic views. Customers can also make notes on the vector drawings and any changes appear automatically the next time you open the project.



Current SoftPlan Version

Never pay for an upgrade again. SoftPlan+ subscribers have no-cost access to the latest version SoftPlan has to offer. Receive all of SoftPlan’s time-saving enhancements as soon as an updated version is released.

Toll Free Technical Support Number

Reach SoftPlan’s technical support team with the SoftPlan+ toll free number to receive personalized assistance.

Integrated Support Tickets

SoftPlan+ includes the ability to submit support tickets directly through the SoftPlan+ interface. SoftPlan then gathers all the files of your project and makes a copy available to the SoftPlan support staff who can then review your project and provide the appropriate feedback and files you need to address the issue.

Command and Control Support

With permission, SoftPlan+ support technicians have the ability to take control of a SoftPlan+ subscriber’s computer for advanced assistance.

*Command and control support sessions are initiated at the discretion of the technician.
All SoftPlan+ features require a high speed internet connection.*



SoftPlan+ cloud drive and services

Customer Interaction

SoftPlan+ strengthens the collaborative process of designing a house by allowing you to publish 2D plans and 3D models that the customer can view from a PC, android, or iOS device of their choice. Always keep your customers up to date.



reView

All reView functionality is available through SoftPlan+ including the authoring of reView & PDF files.

Panorama Views

Automatically generate panoramic views from predefined points to create a fully immersive 3D experience on PC, iPad, iPhone, or android devices.



iOS and android support

SoftPlan+ supports Apple iOS and android devices so that your work can be accessed from anywhere. Using a free viewer app, the people you share with can mark up drawings, add notes, and take virtual tours of a house in full, panoramic 3D, all from the convenience of their iOS or android device.



Online Training Content

SoftPlan+ provides full online access to the complete training library with over 160 step-by-step tutorials. New content that is added to the training library becomes immediately available to SoftPlan+ subscribers.



Premium Content

SoftPlan+ subscribers have access to additional content that is stored on the SoftPlan+ cloud server. SoftPlan may augment these offerings at any time.

Enhanced Libraries

SoftPlan+ symbol libraries include new libraries of Kitchen Accessories, Beds, Stools, Lights, Office Furniture, Range Hoods, Chaise Interior Décor, Tables, Dressers, Wardrobes, Entertainment Consoles, Credenzas, Sectionals, Benches, Ottomans, Vehicles, Bathroom Furniture and much more.



Enhanced Textures

SoftPlan+ texture libraries include enhanced entries and manufacturer offerings including some from the manufacturers listed below.

Product names, logos, brands and other trademarks referred to within SoftPlan Systems, Inc.'s products, services and within this brochure are the property of their respective trademark holders.



BRIZO



JENN-AIR



caesarstone

Trex

Knoll

Miele

AVONITE
SURFACES



Room&Board

more information at www.softplan.com

SoftPlan Systems, Inc.
8118 Isabella Lane
Brentwood, TN 37027

phone: 800-248-0164
email: sales@softplan.com
web: www.softplan.com

