



design | 3D | materials lists

SOFTPLAN
ARCHITECTURAL DESIGN SOFTWARE

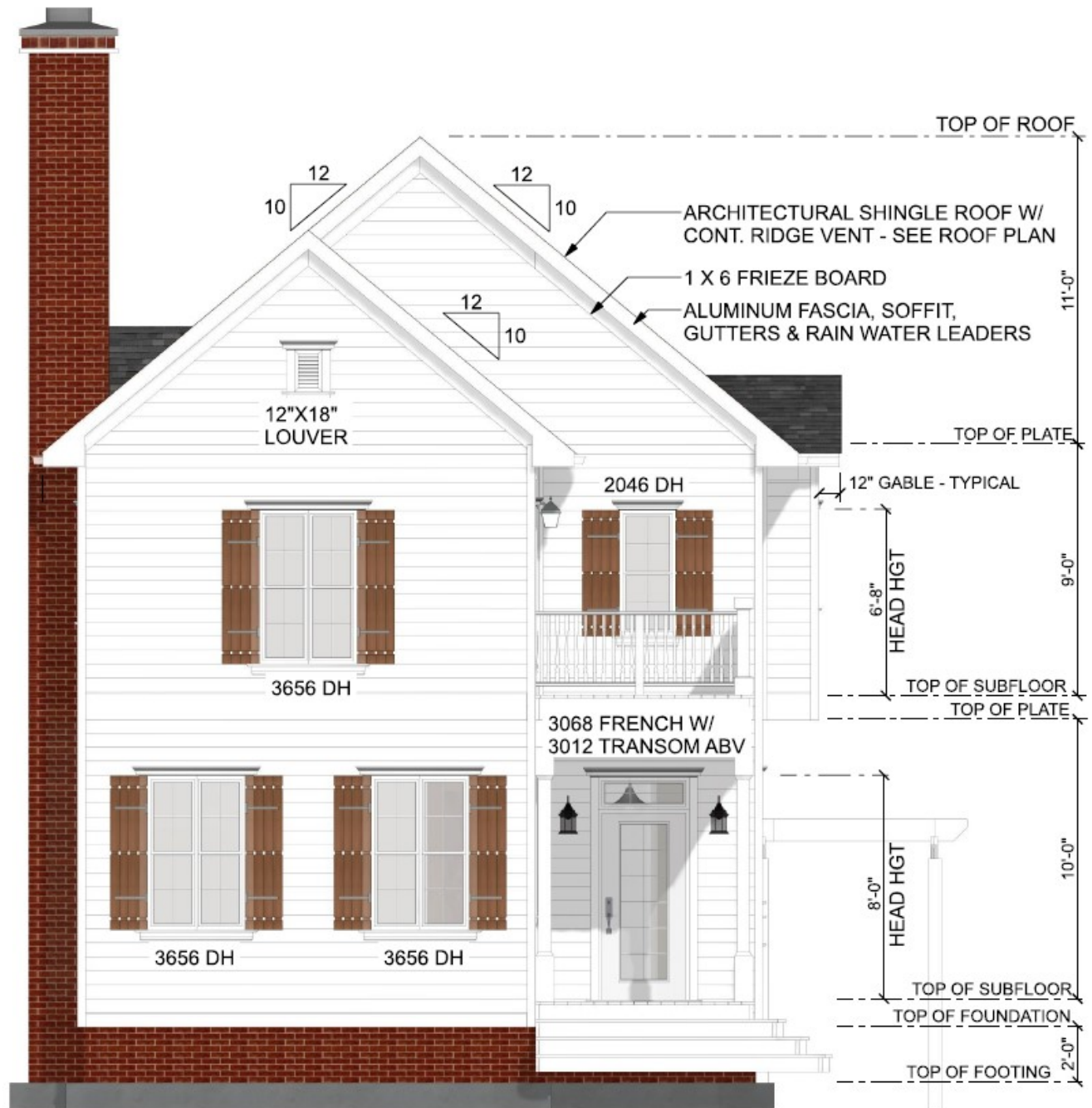
version 2020

SoftPlan version 2020 Major Features: Elevations & Sections

Annotated Elevations, Sections and Interior Elevations

Dimensions, Extensions, Notes, Symbols, and other details can be added to live Elevations, Cross Sections, and Interior Elevations in the new Annotated mode.

As changes are made to the model drawings, dimensions and auto generated elevation markers revise to create up-to-date detailed images that can be directly added to Plan Sets. The underlying model data is available to edit on these views by simply switching into Model mode, making the changes, and then switching back into Annotated mode to continue adding details. Elevations and sections can also be rendered in any of SoftPlan's 3D modes to create a number of different presentation styles.



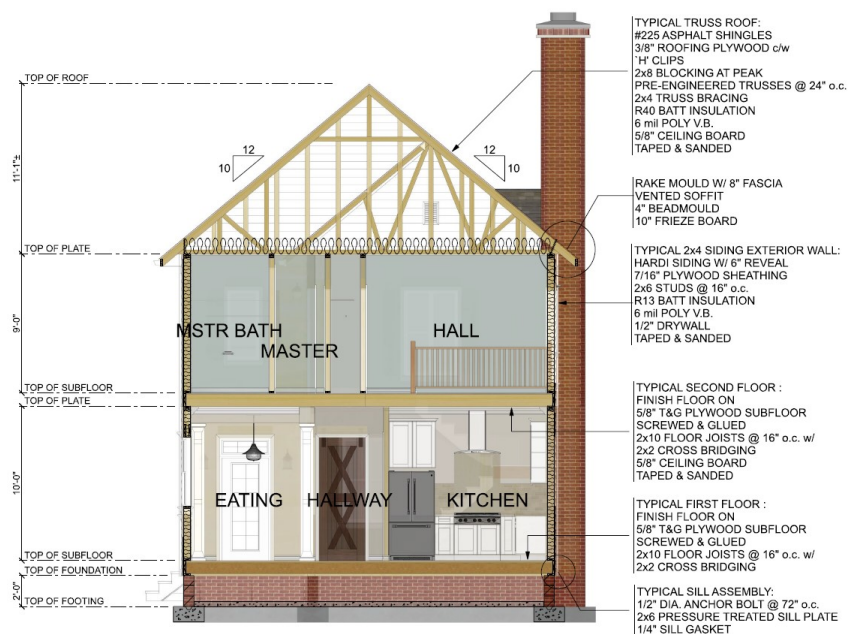
SOUTH ELEVATION
SCALE: 3/16" = 1'-0"

Other Improvements to Elevations, Sections and Interior Elevations

- All Stair and Railing Types extract in Elevations and Sections—formerly only Deck Stairs extracted
- Dimensions are automatically added to the peak of the Roof
- Direction can be automatically added to the Plan Set Labels on Elevations and Interior Elevations (for example: North Elevation, Master Bath West)
- Elevations extract Cabinets—useful for outdoor kitchens
- The line between the wall and the gable end material is automatically removed if the two surfaces are the same material and are coplanar



- If Custom Lighting option is NOT selected, all elevations ignore the sun position and are lit evenly—brightens all Elevation Views
- Issue with duplicate Openings appearing on Elevations is resolved
- If the Render Options > Face Options > Opacity setting is at 100%, the glazing in the windows will be completely opaque preventing items inside the house from showing
- Pen Settings and Layers on a saved Elevation, Section, and Interior Elevation come from the Project Options rather than the System Options
- Section and Interior Elevation Lines appear faded when on a Layer set to Fade
- Shadows NOT added to Sections by default
- Sub-Fascia added to saved Sections as a Board End
- Wall and floor height indicators default to UPPERCASE
- Wall Definition Profile changes are updated to the model immediately
- Non-bearing walls extract in Elevations
- Drywall extracts in Elevations



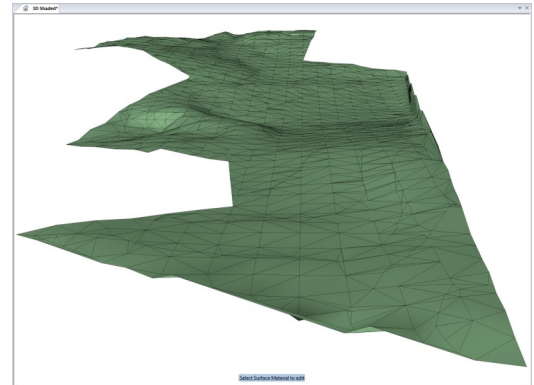
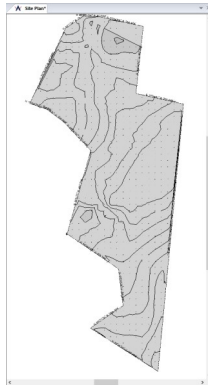
Lumion direct export added allowing SoftPlan+ subscribers to seamlessly leverage Lumion's rendering capabilities.



Google Terrain Import

This version adds a Google Maps Site Data command that imports 3D terrain from Google directly into the Site in SoftPlan.

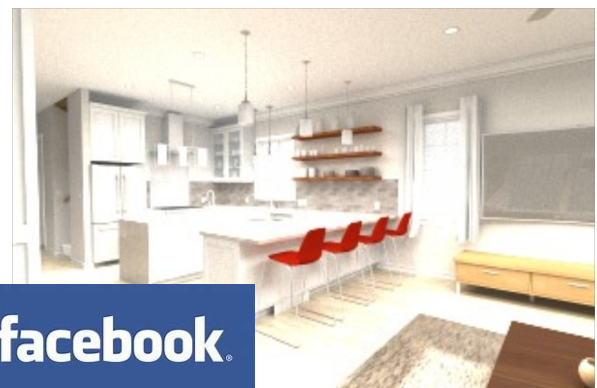
This allows quick creation of 3D site plans without having to visit the site or have the site surveyed.



Facebook and Website 360° Photo

With a SoftPlan+ subscription, SoftPlan version 2020 offers the ability to generate 360° photos within the 3D model and publish them for placement on a Facebook page or website.

360° photos are interactive images that can be panned and explored by anyone viewing them.



facebook

Additional SoftPlan+ Manufacturers' Content includes:

Andersen WINDOWS • DOORS 



BOSCH

CertainTeed SAINT-GOBAIN



daltile®

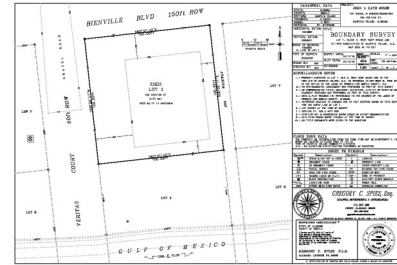
wayfair

SoftPlan version 2020 Major Features

PDF Import as Shapes

This version includes the option to import PDF drawings as shapes.

This allows for the quick editing of items obtained from external sources such as surveys and details.



Auto Attic

SoftPlan version 2020 eliminates the need to tediously finish attic spaces and bonus rooms by introducing two new auto attic commands. The Create Attic Subfloor command generates subflooring that fits attic spaces defined by the truss framing while the Create Attic Space command takes this process even further by giving the user the option to add walls, ceilings, and define the space with a detailed Room symbol.



Lock Open Project

If a SoftPlan Project is already open by another user, it will be locked from opening a second time.



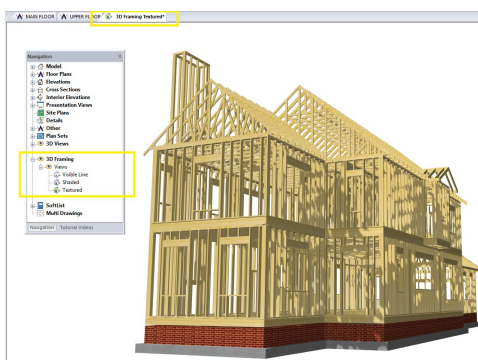
DISTO

Dimensions can be input directly from Leica DISTO measuring devices.



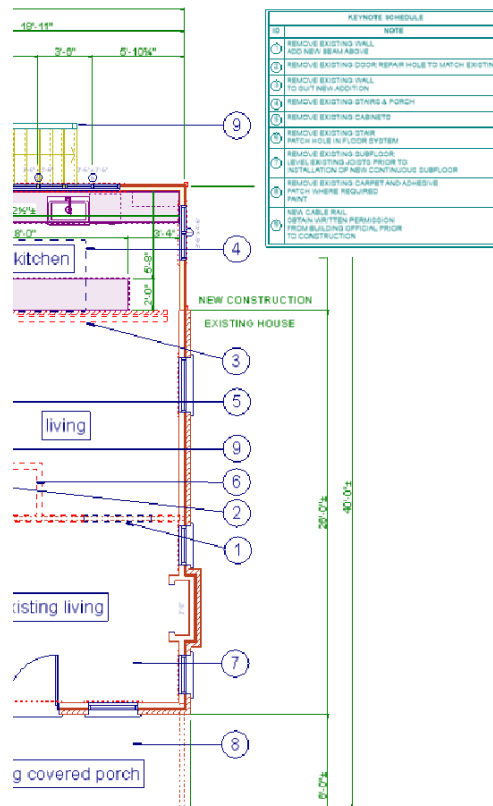
3D Framing

Select 3D Framing Views from the Navigation Window for a much simpler way to display the 3D framed model.



Keynote

The new Keynote function creates the ability to represent a note with a number and then reference that number on an automatically generated Keynote Schedule.



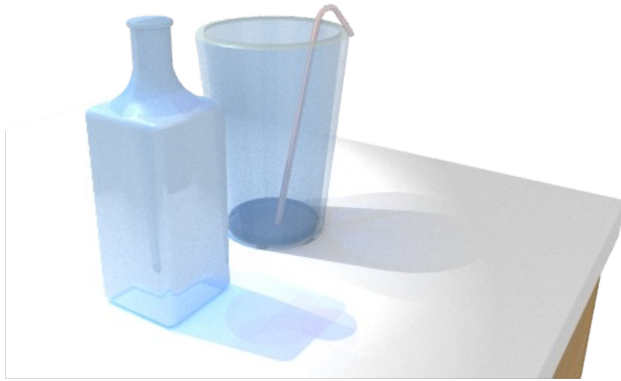
Drawing Option Sets

Drawing Options capabilities have been expanded to allow all Drawing Options for all drawings in a project to be controlled at the Project level. This means that changes to configurations, such as note font and size, automatically carry through all SoftPlan drawings in the project.

If different Drawing Options are required for different types of drawings (site plans, detail drawings, elevation drawings, etc.), it is now possible to create named sets of Drawing Options and apply them to those specific drawings while still controlling changes to the overall project at the Project level.

3D

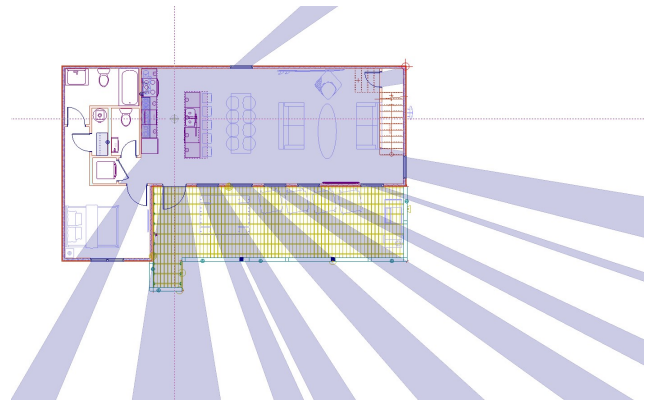
- 3D Speed option added to System Options—controls how fast the camera moves
- Horizontal Reverse and Vertical Reverse enabled for Symbols on a right-click



- Caustics, Colored Reflection and the Refraction options added to Ray Traced rendered mode— results in ability to show distortion for materials such as glass



- Common Textures on coplanar walls from different floor plans will align on the 3D model
- Continuous Animation playback option added to Animation Timeline
- Estimated Time to Complete displayed when a Path Trace render to file generates
- Symbols with large surface counts perform better
- Rotate Camera Around Focus & Rotate Focus Around Camera options added to Animation Timeline
- Set Wall Tops command added to 3D
- Sun Studies added directly to Animation Timeline
- Texture rotate angle option added
- The background on a Tone Mapped image is excluded from the tone mapping effect
- Vertical & Horizontal Offset option added to Texture Edit



- Sight Line Study command added to 3D mode displays what a person would see while standing at a specified point in the house

Area

- @AREA_MODEL# stamp added
- Areas added to Notes via Information Stamps will list according to "Round Area to the Nearest Unit" setting
- Area of a Paint pattern is listed in the Edit dialog
- Color configuration added to Options
- Area Value option added to Visible Items

Beams

- Beam ID option added to plans & schedules
- Beam Label option added to Visible Items
- Beam Types used on drawing listed at top of Beam list
- Floor System Flush Beams can be Dimensioned directly
- Length of Beam Edit automatically updates Extensions

Building Options

- Building Option dialog is modeless allowing the drawing to Zoom & Pan while the dialog is open
- Building Option Groups can be added as either a Checkbox or Radio Button group. Radio button groups allow only one building option to be visible at a time
- Building Option setting changes: visibility, color and fade update the drawing immediately
- Cabinets on disabled Building Options ignored when placing Crown Molding
- Hide Unused option added
- Items that are derived from items on a Building Option inherit the Building Option meaning items on generated drawings (Elevations, Sections, Framing Plans, etc.) are placed on the same Building Option as the source item in the floorplan
- Items on Locked Building Options display the current Building Option on a right-click of the mouse
- Items can be assigned to a Building Option with a right-click
- Pen override option added—prints all items on a Building Option with the assigned pen rather than the pens assigned to individual items
- Numeric and Alphanumeric sorting added

Cabinets

- 3D Image option added to Cabinet Schedule
- Cabinet Lighting added to Electrical Schedules
- Chamfered Corner cabinet placement improved
- Commonly used Face Layouts appear at the top of the selection list when drawing a cabinet
- Draw in Solid Line option added to Countertop and Wall Cabinets—when selected, the countertop and upper cabinets draw with a solid line and the lower cabinets draw with a dashed line per NKBA standards
- Freeform Countertops offset by default to be even with other Countertops
- Freeform Countertop shade will not print if the countertop is set to not print
- Cabinet Lighting added to SoftList
- Cabinet shape Standard renamed to Rectangular
- Edit Cabinet will locate by selecting the countertop—previously the cursor had to be directly over the cabinet
- Finish default option added to System/Project/Drawing Options
- Handles added to Cabinet image on Schedule
- Linetype option added to Freeform Countertops
- Sink cutting of countertops improved

Ceilings

- Area of Ceiling is listed in the Edit dialog
- Crown Molding can reference the side of Beams—useful when creating coffered ceilings
- Ceiling Truss command added—trusses placed below ceiling rather than below roof sheathing
- Draw Attic Floor command added



- Draw Post available directly in Ceiling mode
- Grille command added
- Bearing and non-bearing walls display their Plate Height in Ceiling Mode
- Set Reference Edge command added to Joist right-click
- Stagger option added to Ceiling Joists—automatically reduces the first joist spacing
- Override checkbox added to Tile Offset fields

Details

- Stair Section Nosing Width and Tread Thickness options added
- Subfloor option added to Joist Section Detail
- Mortar First option added to the Brick Section and Block section
- Open Web Steel Joist Detail added

Dimensions

- Auto Dimension improvements made when Include Interior Walls is selected
- Dimension Options settings for Shapes are considered when using Dimension Point command
- Display In Inches added to Arc Dimensions
- Dimensions/Dimension Lines are much less prominent when using the Draw Select command—noticeable when working in congested areas of a plan making it much easier to select the desired item
- Dimensions can be input directly from Leica DISTO measuring devices
- Fat Line Arrow Heads maintain their aspect ratio as the size is increased or decreased
- Flat Arrow style added
- Text Override added to Angle Dimensions
- Top of Roof Extensions & Dimensions added
- Floor System Flush Beams can be Dimensioned
- Plumbing Drops in Floor System mode can have Extensions and Dimensions added
- Repeat Edit changes Dimensions with Show Text enabled
- Round to Nearest option added to Edit of dynamic Dimensions

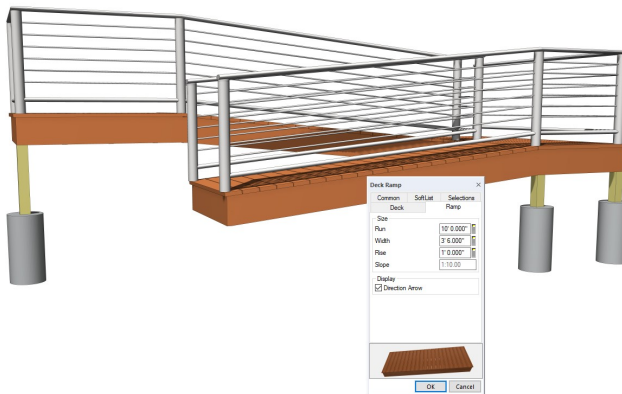
SoftPlan version 2020 Detailed Features

Distance

- Set Distance Between edit of a Dimension is committed after the "arrow" is selected
- Set Distance Between command is improved when used on a crowded area of a drawing

Decks

- Compound Deck Stair editing improved
- Deck Beam ID option added
- Deck Beams can be added to Beam Schedule
- Deck Rail Caps Finish option added
- Edit Dimension can be used to change the length of a Deck Bench
- Length of a Deck Beam edit option added



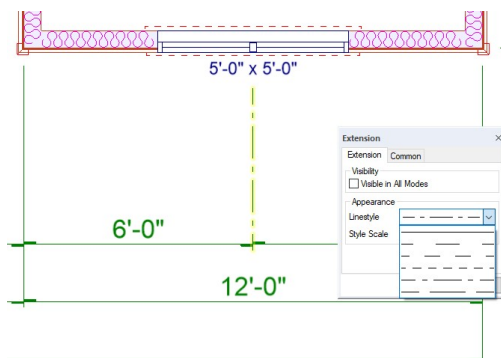
- Wood-framed Ramp command added to Deck Stairs

Electrical

- Auto Place Outlets: Minimum Opening Offset option added
- Cabinet Lighting added to Electrical Schedules

Extensions

- Extensions at the meeting of a Deck and a Wall or Landing and a Wall will remain associated with the Deck or Landing and not to the Wall



- Linetype override option added to Extensions
- Mask Overlapping Extensions option creates a gap in one extension when two extensions cross
- Placing and editing Dimensions and Extensions on very small objects improved

Finishing Options

- Area default color added to System/Project Options
- Floor default color added to System/Project Options

File

- AutoCAD drawings with Layers containing Unicode characters import into SoftPlan
- Direct export to Lumion added
- Drawings in the model are automatically loaded into memory resulting in increased performance for some operations
- Export of drawings into Mitek containing very short walls improved
- If Cleanup is the only command executed in a drawing session, a Save Drawing prompt appears
- If a SoftPlan+ shared project opened from the Start Page is currently open, a message appears indicating that the Project is currently in use by the applicable key
- Images located on a Layer set to Fade will appear faded when exported to a PDF file
- Import & Export AutoCAD .DWG 2018 added
- Import and Export support added for SketchUp 2018 file format
- Import of AutoCAD drawings with very complicated Symbols improved
- Invisible text is NOT imported from an AutoCAD drawing
- Last Modified Time displays when cursor is over project name on Start Page
- Opacity option added to imported image
- PDF Import added to Plan Set
- PDF Import of files with significant raster content improved
- Pin Project option added—lists the Project at the top of the Start Page project list when selected
- Plumbing Drops & Electrical Connects Export only when visible
- Resolution of an imported image file is maintained—formerly images were resampled to max 1024 x 1024
- Recovered Files tool added—appears after SoftPlan has shutdown unexpectedly with options for file recovery
- Remove Project command added to right-click on Start Page
- Right-click SoftPlan icon button on the Windows taskbar to display a list of recently used projects
- Remove Shared Project command added to the Start Page of user who is sharing project
- Search command added to the Project section of the Start Page
- Sharing With option added to SoftPlan+ Start Page—new drop-down menu listing previously entered values for User Name and Key Number appears
- SoftPlan drawing preview added to Windows File Explorer
- Surfaces exported to SketchUp are logically grouped

Floor System

- Adding a Hole to a Floor System only cuts the hole through items on active Building Options
- Dimensions can be added to Slab Recesses
- Dimension override fields added to Slab Recess—specified size is independent of the wall above
- Extensions & Dimensions added to Plumbing Drops
- Flush Beams in a Floor System can be Dimensioned
- Grille command added
- Level selection added to the toolbar allowing the Level to be selected prior to placing the Floor System items
- OWSJ Floor Joists default to be chord bearing
- Posts can be added directly in Floor System mode
- Reverse a Slab with Footings properly maintains the footing joins
- Set Reference Edge command added to Joist right-click
- Structural Slab Dimensions update as edges adjusted
- OWSJ & Top Chord Bearing Truss types added to System/Drawing Options > Floor System Options

Information Stamps

- @AREA_MODEL stamp added
- @BUILDER_COUNTRY stamp added
- @BUILDER_LICENSE stamp added
- @PROJECT_DESIGNER stamp added
- @PROJECT_NUMBER stamp added
- @PROJECT_STORE stamp added
- @ELAPSED_TIME stamp added
- @ELAPSED_TIME_SHORT stamp added
- Hover the mouse over an Information Stamp to preview the contents

Interiors

- 3D preview added to Dentil Molding
- Cabinets on disabled Building Options are ignored when placing Crown Molding
- Area & Flooring Default color configuration added to the Finishing Options of System/Project Options
- Interiors can reference the edge of a set of stairs
- Interiors can reference the edge of Symbols—aligns the flooring with the edge of a bathtub
- Single Wallcovering can extract over multiple walls
- Symbols & Cabinets can reference Subfloor or Flooring

Interior Elevations

- Arrow keys work with Move command
- If Lighting option is not custom, no Shadows are added
- Symmetrical Walls have an "end cap" of the surface material automatically added

Move

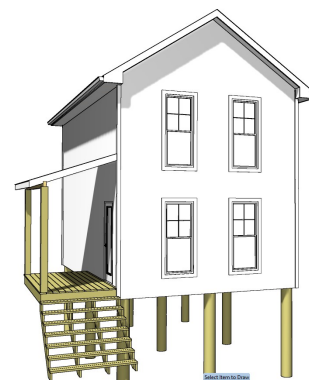
- Placement of Symbols defined without "Ignore Walls" selected against a wall is easier
- Symbols with text ignore the text characters when Center in Room & Center Between Edges commands are used

Layers

- Layer dialog is modeless allowing the drawing to Zoom and Pan while the dialog is open
- Layer setting changes: visibility, color and fade update the drawing immediately
- Extensions can be added to items located on a Layer that is locked
- Group level management added
- Hide Unused option added
- Multiple Select via Shift and Ctrl keys added to Layer Setup dialog—selected layers can be edited or removed
- Items on Locked Layers display the current Layer on a right-click of the mouse
- Items can be assigned to a Layer with a right-click
- Set Default Layer option added to Cabinets, Posts and Speed Notes
- Layers appear in the sorted order from the Drawing Options in the Edit dialog
- Use Project Options option added—if selected Layer management is via Project Options

Model

- Create Attic Space command added—automatically places subfloor, walls, ceilings, and room finish to construct an attic space within a roof cavity
- Identical coplanar materials: 3D, Elevation or Section removes the line between the two surfaces
- Stairs are included in the Auto Basement command



Miscellaneous

- Auto Basement Wall change behavior enhanced
- Higher resolution icons added: 64x64 and 256x256
- If the Wall at the end of a Rod & Shelf is moved, the Rod & Shelf is automatically adjusted
- Enable Multiple Undo System Option removed
- Number of Rods option added to Rod & Shelf
- Wire Shelf option added to defaults
- Visible Items on the drawings update in real-time when turned off/on from the dialog
- Rod & Shelf back and ends locate and account for the drywall
- Simple calculations can be completed directly in the fields on a dialog box (example: - 6"+7/16" adds 7/16" of an inch to 6" to make 6.4375")
- Previous Selection command added to the Tools menu—clicking or pressing P recalls the last selection set

Notes

- Cabinet Lighting added to Electrical Schedules
- Display override option added—allows "As Entered," "UPPERCASE" or "lowercase"
- Keynotes added
- Note size is maintained when Wrap on Adjust option is enabled
- Speed notes placed as if a note was being typed (that is, without a buffer)

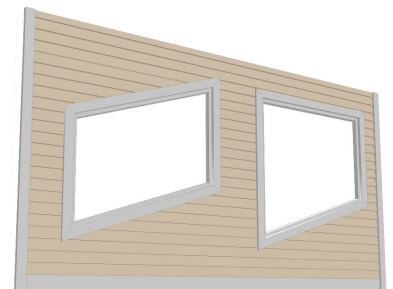
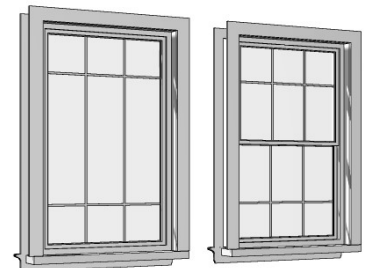
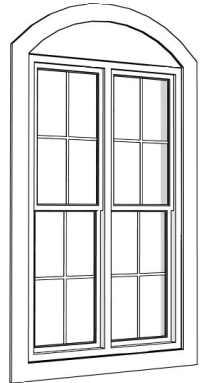
Openings

- Andersen A-series windows added
- Andersen E-series windows added
- Barn Doors open the full width in 3D
- Between Openings options added to the Center Opening command—moves the selected opening equidistant to the openings on each side
- Brick Mold displays in plan view as a non-printable item like other opening trim
- Camber Top Doors libraries added
- Casement windows can show open in 3D if a Hinge Side is specified
- Custom Grilles enabled
- Deflection on an arch top edit is on the opening level eliminating the need to create an arch for each width/radius combination
- Deflection option added to multiple vertical section windows, arch top double-hung

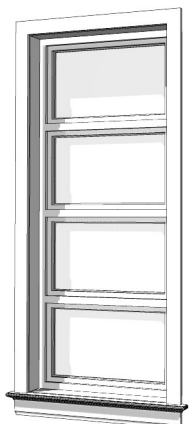


- Double Barn Door place a leaf on each side of opening
- Display Open in Model option added to Garage Doors
- Extraction Options Simple and Enhanced removed
- If a single door is edited to become a double door the swing defaults to Left/Right
- Interior Trim updates immediately when the size of an Opening is edited
- Interior Finish on an opening can be overridden in Room Mode—the Interior Trim can be different colors, or even removed, in different rooms
- Interior Grille surfaces are separate from exterior when the Cladding option selected
- Issue with overlapping duplicate Openings on Elevations resolved

- Jack Arch over openings can be added via the new Deflection option on Exterior Trim
- Opening Mounting Bucks option added—places framing inside the rough opening of a block or concrete wall
- Omit Opening ID option added to Display Options
- Niches use Opening Dimension Options
- Opening Opacity in Elevations is 100% by default preventing items inside the house from showing
- Prairie Perimeter Grille Style added
- Remove and Fill Display option added
- Reverse Cottage window type added
- Room Schedule ID column added to Opening Schedule
- Round Opening placement in thick walls improved
- SHGC (Solar Heat Gain Coefficient) column added to Opening Schedules
- Shutter Width override option added
- Slider Window Sashes display in plan
- Bottom Slope option added to Openings
- Size displays in the Opening dialog—makes selecting the proper opening easier



- Grille size on Trapezoid windows can be changed
- The legs lengths on a Trapezoid window can be controlled independently
- Vertical and Horizontal Sections options added—used when creating modern aesthetic windows
- Window & Door Frame Thickness settings separated



Paint

- All Image File option added to the selection dialog—displays all graphic file types available for insertion at once
- Area of a Paint pattern listed on Edit dialog
- Model Paint added to the items that can be placed using the Draw Select command
- Regenerate added to right-click when located over a Paint pattern

Posts

- "X" fill pattern added
- Posts can be drawn in Floor System Mode
- Post and Post Pad sizing independent of each other when Maintain Aspect Ratio is selected

Plan Sets

- Overlay lines appear black on white Plan Set page if using a black drawing background
- Not to Scale override added to the Scale selection of the Label
- Pages Use Screen Color override option added
- PDF Import added to Plan Set
- Room Sizes are read from the right when a Drawing in a Plan Set is rotated 90 degrees
- Title Blocks are included when a Project is opened on another SoftPlan station (*SoftPlan+ feature only*)
- When creating a single PDF file via right-click in the Navigation Window, file name is automatically filled in

Print

- 1/16" = 1' - 0" added to default print scale
- As Defined option added to Outline Pen for Symbols, Electrical Symbols & Speed Notes if originally defined with different pens
- Freeform Countertop shade will not print if the countertop is not set to print
- Pen Setup > Configure Print Pen Styles > Reset to Project added
- Plan Set Print Reverse Pages option added
- Plan Set Print Use Screen Color override option added

Railings

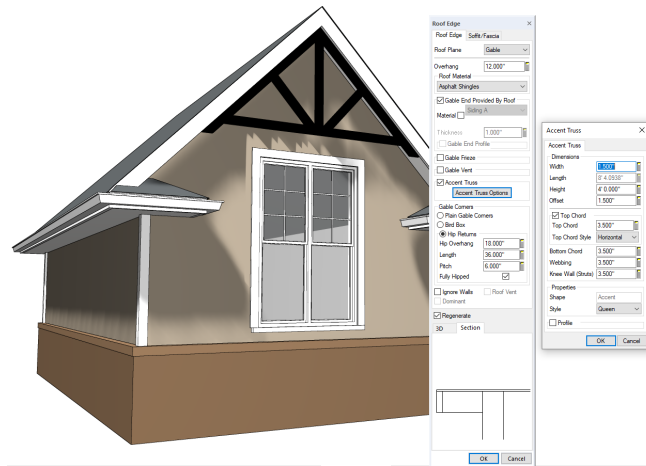
- Caps added to Mid Post
- Default Post Cap configuration added to Drawing/Project/System Options
- Draw Select of an existing Railing improved
- Railing at Mid Post intersection improved
- Spacing added to Mid Post tab on an Edit

reView

- Use Screen Color option added to Batch Export PDF

Roof

- Accent Truss command added to parametrically place the decorative truss into a gable end
- Auto Roof improved



- Fascia Thickness Roof Option added
- Double Bull Nose Roof Frieze improved
- Double Hip Roof Holes Fascia properly forms
- Frieze on a nested Dutch Gable Roof improved
- Frieze placement on small wall jogs improved
- Gable Vents added to Bullnose Roofs
- Roof Insulation—sprayed option added
- Placement of Cricket Roofs improved
- Profiles option added to Gable End material
- Ridge Caps added by default
- Roof planes on different layers intersections improved
- Roofs with overlapping sections improved
- Roof Vents can be automatically added to a Roof Plane based on area
- Saddle Roofs are added with a single mouse click
- Extensions and Dimensions can be pulled from either the Edge or Center of a Beam
- Fit to Roof command improved

Roof Framing

- Edit dialog shows 3D image of element being edited
- Energy Heel added to Scissor Truss
- Hip Truss Set command added—places girder and hip trusses in a single command
- Hip Set Valley Rafter stops at intersection of Girder Truss
- Profile option added to Truss—used for log and post & beam construction
- Purlin Thickness option added
- Remove Roof Framing added to the right-click
- Roofs on disabled Building Options do not affect how Truss Sets generate

SoftPlan version 2020 Detailed Features

Shapes

- Arrow Heads Fat Line maintain their aspect ratio as the size is increased or decreased
- Edit Form Polygon command provides visual feedback making it easier to see the results
- Flat Arrow arrowhead style added
- Multiple items can be trimmed / extended via the Selection command
- Opacity option added to Shape Polygons
- Show Border option added—useful when the texture is set to solid and opacity is less than 100% to create shaded areas

Site

- 3D generation of Site Plans with very large numbers of shot points is faster
- Draw Shot dialog appears when the drawing action is started—allows the elevation to be set resulting in a smoother drawing process
- Edit Form Polygon command provides visual feedback making it easier to see the results
- Extract in Model option added to Shot Point—when selected the elevation of the point will affect the associated site poly regardless of its new vs. existing setting
- Fit Site Polygon to Ground will Repeat Edit
- Import Google Maps Site Data command added—imports site terrain from Google
- Neighborhood dialog revised: modeless, resizable, and changes update live
- Opacity option added to Site Polygons
- Site Hole command added used to cut a hole in a non-property Site polygon (for example, a hole in a patio to accommodate a pool)
- Site Line Pen setting will Repeat Edit
- Site Work type Concrete added—used for air handling equipment or pool equipment pads, etc.
- Site Work type Water Feature added
- Surface Area added to Site Poly properties—separate from area taking elevation changes into account
- Undo applies to edit of Direction of North
- Volume data added to Site Polygon edit dialog

Stairs

- Adjust of Wrap Around Stair improved
- Stairs hold their absolute positions when copied to and pasted from the SoftPlan clipboard
- Interiors can reference the edge of a set of stairs
- Radius Concrete Steps with Round Nosing completely form
- Riser Thickness option added
- The Total Riser Count note can be relocated to avoid conflicts with other items on the drawing
- Total Riser option added controls default display

SoftList

- Cabinet Lighting added to Softlist
- Ceiling variables added Tray Ceilings
- Constant **vertical** added to Group Roof Truss
- Excel exports includes the Waste Column
- Finish Options order is consistent with the Finish Options list in the System Options
- **jamb_size** variable added—differentiates openings in a 2x4 wall from openings in a 2x6 wall
- Labor Markup added to apply a multiplier to the Labor value separate from the Cost value (the old Markup value is renamed Cost Markup)
- Measure type added to User Defined Variable
- Opening Trim constant **vinyl** added to the Opening Group
- **rod_count variable** added—returns number of rods for Rod and Shelf
- Shadow Board variables **shadow_board_height** and **shadow_board_thick** added
- Site **surface_area** variable added—returns surface area of sloped site polygons
- Trim Board variables **treatment_width_start** and **treatment_width_end** added

Solids

- Solids have the same stacking and sloping properties as symbols

Type Erase

- Cabinet Schedule added
- Interior Elevation Markers added
- Type Erase command displays a dynamic preview to display the resulting changes

UHD (Ultra High Definition) Monitors

- 3D Navigation, 3D Camera, 3D View dialog size increased
- 3D Surface Edit dialog icon size increased for List View/Grid View, Edit Color, Select Color
- Icon size on Schedules increased
- Icon size on SoftList Layout mode increased
- List View / Grid View icon size increased
- Navigation Tree highlight properly sized
- Edit dialog calculator button size increased
- Rulers on Plan Set pages and at the top of the layout dialog for SoftList display properly
- Table Title & Drop Box size increased
- Tables—Sort, Reorder, Adjust indicators properly sized
- Toolbar Print Pen selection dropdown sized properly
- Toolbar Linestyle and Texture drop-downs increased in size
- Tool Tips increased in size

Symbols

- A symbol can act as a corner for Symbol placement—easier to place washer next to dryer
- Attributed Symbols preview attribute contents when the cursor is over the symbol
- Change Symbol added to right-click
- Change Symbol only displays folders containing Symbols used on the drawing display on the tree
- Change Symbol option added to change the current symbol—all occurrences of the symbol on the current drawings or all occurrences of the symbol in the entire model
- Comment/Link fields added to Symbol definition
- Definition changes initiated from a 3D model window are maintained
- Draw Symbol displays a preview showing how the symbol will be placed
- ESC key stops the symbol preview until the mouse is clicked again
- Horizontal Reverse and Vertical Reverse enabled for Symbols on a right-click
- Interior Elevation extraction option added to Symbol Configuration
- If a symbol is defined without "Ignore Walls" selected, the Symbol will “bump” into the wall while moving making accurate Symbol placement easier
- If a symbol is only visible in a single mode (Visible in All Modes checkbox off), then the symbol can be moved or edited in the drawing mode that it is visible in
- Interior polygons can reference the edge of Symbols—used to align the flooring with the edge of a bathtub
- Symbols can be set to reference roofs, offset, and slope by default

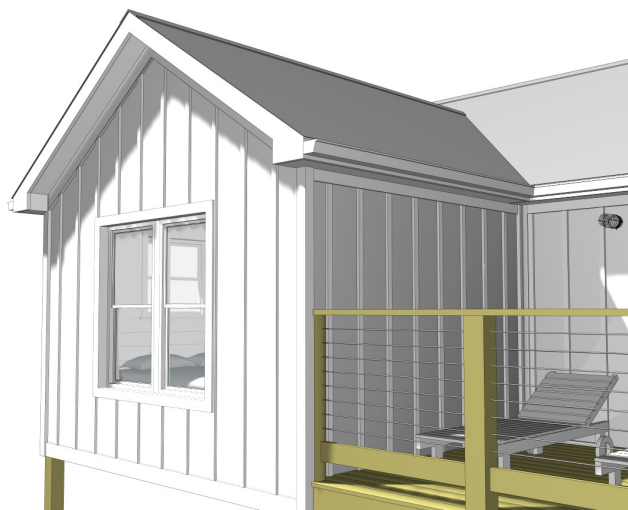
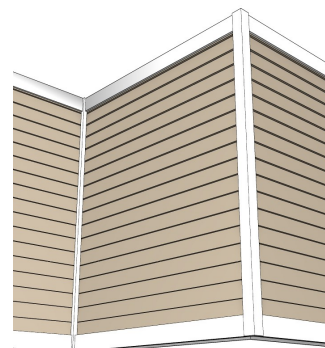
Wall Framing

- Backer Board option added to Bearing and Non-Bearing Intersect Framing Styles
- Framing automatically added under a Girder Truss in 3D
- Framing placement at Openings with a Double Sill improved
- Opening Mounting Bucks option places framing inside the rough opening of a block or concrete wall
- Trapezoid windows can have a sloped Header



Walls

- Board & Batten added to materials that can be used on a Transition Wall
- Change Wall maintains the attachment of symbols, electrical, and cabinets attached to a wall
- Change Wall or editing a Wall Definition is smarter in the way it aligns the new wall with the old wall
- Convert to Shapes properly converts a wall containing shaded materials
- Inside vs. outside Corner Boards can be sized independently from each other so that the inside corner boards can be smaller than the outside corner boards
- Set Wall Tops command added to 3D
- Stud-Pressure Treated material added
- Stud-Pressure Treated-Insulated material added
- Top and Bottom position fields added allowing the corner boards to be placed independently of the underlying wall
- Wall end heights can be adjusted independently in 3D
- Wall Joins between like materials of different heights and offsets improved



- Vertical Profile materials added to Wall Definition—used to physically represent materials like Board & Batten
- Wall Shading added as item on Visible Items list
- Wall Types already in use on the drawing appear at the top of the list



SoftPlan+ is a subscription-based service that offers complimentary upgrades, enhanced technical support, access to exclusive content, the complete training library, and the SoftPlan+ online cloud drive that makes sharing projects across multiple locations easier.

Cloud Sharing

SoftPlan+ saves the most recent copies of projects to the SoftPlan+ cloud drive. With a SoftPlan key and a high-speed internet connection, a different system installed with SoftPlan can continue work on a shared project.

SoftPlan reView extensions also allow documents to be published for customer viewing, including 2D vector drawings and rendered panoramic views. Customers can also make notes on the vector drawings and any changes appear automatically the next time the project is opened.

Current SoftPlan Version

Never pay for an upgrade again. SoftPlan+ subscribers have no-cost access to the latest version SoftPlan has to offer.

Toll Free Technical Support Number

Reach SoftPlan's technical support team with the SoftPlan+ toll free number to receive personalized assistance.

Integrated Support Tickets

SoftPlan+ includes the ability to submit support tickets directly through the SoftPlan+ interface. SoftPlan support staff can review a project's files and provide the appropriate feedback to address the issue.

Command and Control Support

With permission, SoftPlan+ support technicians have the ability to take control of a SoftPlan+ subscriber's computer for advanced assistance.

*Command and control support sessions are initiated at the discretion of the technician.
All SoftPlan+ features require a high-speed internet connection.*



Customer Interaction

Always keep customers up to date by publishing 2D plans and 3D models that they can view from a PC, android, or iOS device of their choice.

reView

All reView functionality is available through SoftPlan+ including the authoring of reView & PDF files.



Panorama Views

Automatically generate panoramic views from predefined points to create a fully immersive 3D experience on PC, iPad, iPhone, or android devices.

iOS and android Support

Using a free viewer app, recipients of published SoftPlan files can mark up and add notes to 2D drawings or take virtual tours of a house in full, panoramic 3D, all from the convenience of their iOS or android device.

Online Training Content

SoftPlan+ provides full online access to the complete training library with over 160 step-by-step tutorials. New content that is added to the training library becomes immediately available to SoftPlan+ subscribers.



360° Photo on Facebook and Web Pages

A SoftPlan+ subscription offers the ability to generate 360° photos within the 3D model and publish them directly to a Facebook page or website.

360° photos are interactive images that can be panned and explored by anyone viewing them.

Premium Content

SoftPlan+ subscribers have access to additional content that is stored on the SoftPlan+ cloud server. SoftPlan may augment these offerings at any time.

Enhanced Libraries

SoftPlan+ symbol libraries include new libraries of Kitchen Accessories, Beds, Stools, Lights, Office Furniture, Range Hoods, Chaise Interior Décor, Tables, Dressers, Wardrobes, Entertainment Consoles, Credenzas, Sectionals, Benches, Ottomans, Vehicles, Bathroom Furniture, and much more.

Enhanced Textures

SoftPlan+ texture libraries include enhanced entries and manufacturer offerings including some from the manufacturers listed below.

Product names, logos, brands and other trademarks referred to within SoftPlan Systems, Inc.'s products, services and within this brochure are the property of their respective trademark holders.



BRIZO



Trex



SoftPlan Systems, Inc.
8118 Isabella Lane
Brentwood, TN 37027

800-248-0164
email: sales@softplan.com
www.softplan.com

