



design | 3D | materials lists

SOFTPLAN
ARCHITECTURAL DESIGN SOFTWARE

2022

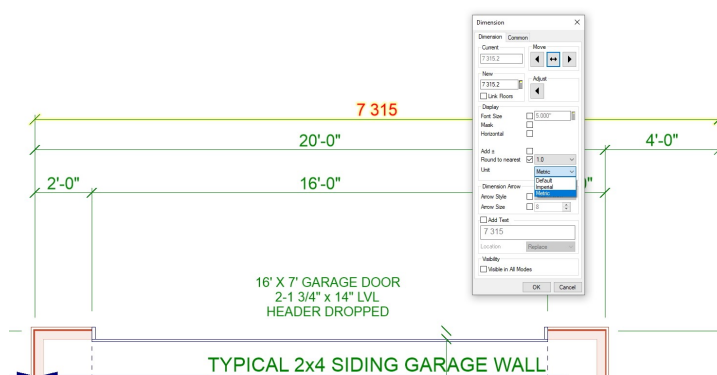
SoftPlan 2022 Major Features

DirectX 12



With this release, SoftPlan integrates many new upgrades to its 3D generation capabilities, including the ability to render the most realistic 3D imagery within SoftPlan to date using the DirectX 12 renderer. Incorporating powerful path tracing, the DX 12 renderer is a technological leap to unparalleled performance and realism. The combination of physically based rendering and real-time ray tracing allows SoftPlan to perform lighting calculations that mimic natural light flow and shadows that result in spectacularly detailed 3D images.

The above image was generated in real-time (instantly) on a DirectX 12 video card.



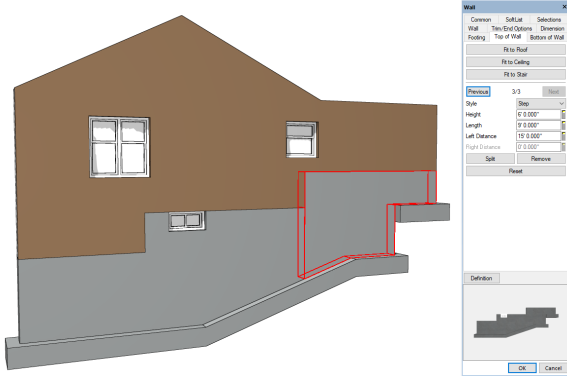
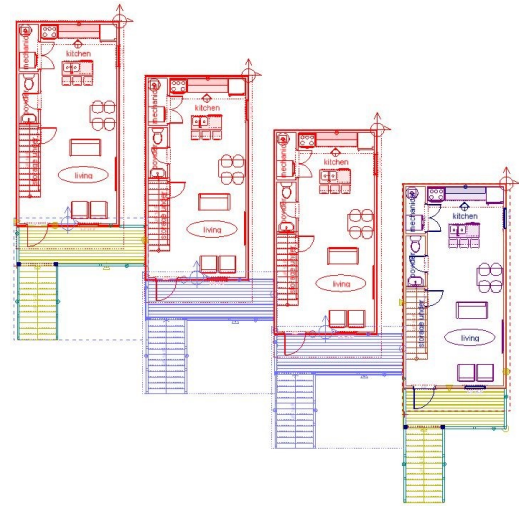
Metric & Imperial on same drawing

When editing a dimension, there is now an option to select the unit of measurement between metric, imperial, and the default setting in the System Options. The ability to select the preferred unit for a dimension on an instance to instance level allows for both metric and imperial measurements to be present on the same drawing.

SoftPlan 2022 Major Features

Nested Drawings & Regions

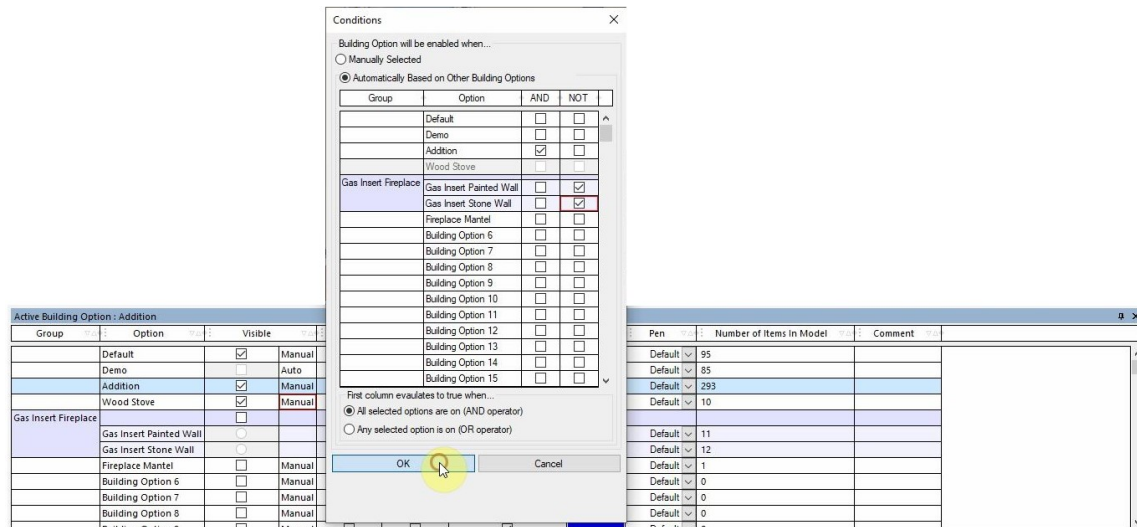
Nested Regions provide a simple and convenient way to insert reference drawings and drawing regions into floor plans that often repeat layouts and other design elements, such as apartment building plans. Once created and inserted into a drawing, nested regions can then be moved, rotated, and modified to seamlessly join with existing elements on the drawing. Nested Regions also have the option to automatically sync to their sources so that they will update as changes are made to the original drawing. With only a few clicks of the mouse to create and insert Nested Regions, this new feature saves time while providing the precision needed to design complete, accurate plans.



Stepped Rake Walls

SoftPlan's Wall edit menu now provides the ability to design complex wall shapes by customizing the tops and bottoms of walls. In the new Top of Wall and Bottom of Wall tabs, walls can be divided into segments and modified to be stepped, raked, or stepped and raked simultaneously by specifying information for each individual wall segment.

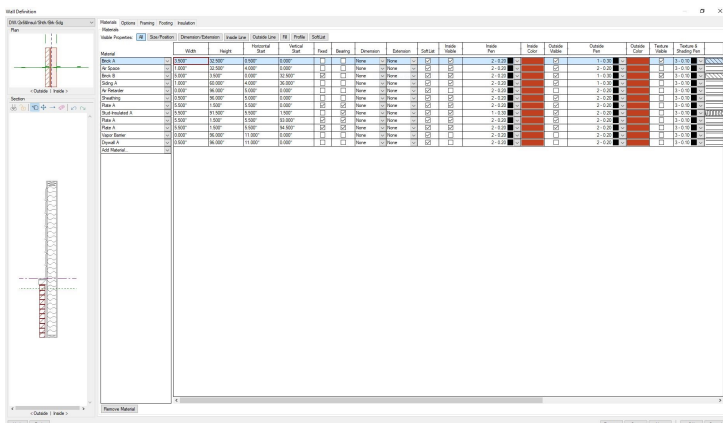
Building Options – Automatic Visibility Conditions



SoftPlan 2022 introduces user-defined conditions to automatically determine when the visibility of a building option should be on or off. By specifying these simple AND/OR conditions, you can control the visibility of complex building option configurations without the need to manually set the visibility for each related building option every time.

Graphic Wall Definition

The new graphic interface within SoftPlan's wall definition menu offers a specialized level of control for creating and modifying the construction of wall types. Using standard SoftPlan tools such as Move, Erase, Adjust Item, Edit, and more, you can now modify materials directly within the wall's cross section view which will allow you to visualize the changes you are making as you define the wall's construction.



SoftPlan 2022 Major Features

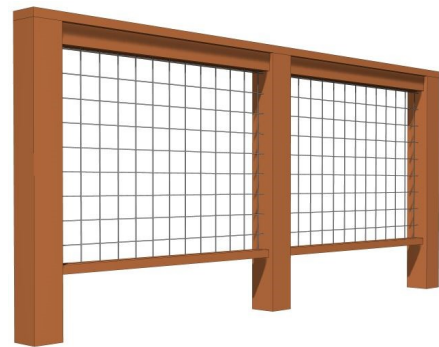
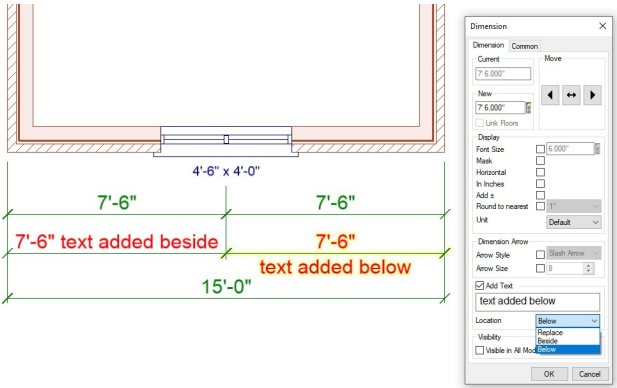
Brace

SoftPlan 2022 includes the addition of a new command for drawing braces. Using the two-click drawing process, you can now quickly add a square brace to a wall or post that automatically draws at a 45-degree angle. Once added, the brace can be edited to modify its run, depth, and width.



Add Text to dimensions

Another addition to the Dimension Edit options is the ability to add custom text to dimensions. Once the custom text has been entered, the position of the text can then be specified to replace the dimension number or to be added beside or below the dimension number.



Railings

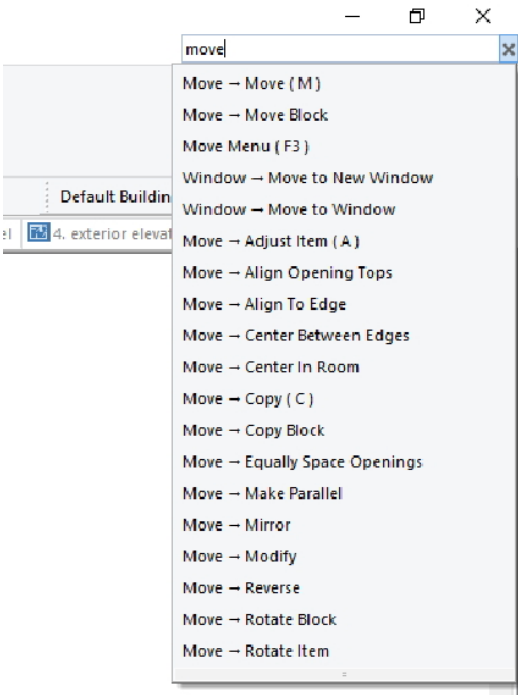
This release completely overhauls SoftPlan's rail configuration by introducing a new railing assembly menu that allows you to customize each part of the railing using a table of definable settings and an intuitive graphic interface. Once configured, these custom railing definitions can then be further customized to your preferences in the railing Edit menu and then saved to the System library for future use.

Quick Find Launch

The new Quick Find tool offers the ability to quickly search for a command to perform or an item to add to the drawing, such as a particular opening, stair, or symbol. As you begin typing the name of the command, the Quick Find menu displays a list of possible selections from which you can click the desired command to use. Search filters can also be quickly applied to narrow search results which will help increase drawing speed.

User Information Defined Stamps

Adding to SoftPlan's vast customization capabilities, this release introduces User Information Defined Stamps. Used for printing descriptive text, these custom stamps are easy to create and add to drawings. Once added to the system or project, the user-defined stamps are saved for future use and can be updated at any time.



SoftPlan 2022 Major Features

Site Mode Vegetation

The new Vegetation command provides a way to draw grass or other vegetation symbols that should be grouped together to populate an area on the site plan. The areas that will receive vegetation can be added as either paint or as a polygon, and the density of the vegetation can be modified to allow control of the vegetation's appearance and coverage in 3D.



3D Printing

Exclusive to SoftPlan+ subscribers, this version further expands SoftPlan's extensive 3D export capabilities by adding an option to export the 3D model in STL format. SoftPlan's simple export process makes it easy to convert 3D models into .stl files that can then be used for 3D printing.



Oculus VR

SoftPlan's 3D presentation takes another big step forward with the incorporation of Oculus VR compatibility. Using an Oculus Quest or Quest 2 with an Oculus link, or an Oculus Rift, SoftPlan+ subscribers can create the experience of stepping into immersive 3D environments they generate from their drawings. While navigating 3D models in virtual reality, what is seen in the Oculus headset is also displayed on the PC screen.



Export Legacy SketchUp Files

Adding to SoftPlan's numerous 3D export capabilities, this version enables SoftPlan+ subscribers to export their 3D models into older versions of SketchUp, including SketchUp 2017, 2018, 2019, and 2020. This expansion of SoftPlan's popular export to SketchUp allows more users to take advantage of the powerful rendering options they need to create stunning 3D presentations.



Additional SoftPlan+ Manufacturers' Content includes:



SoftPlan 2022 Detailed Features

3D

- DirectX 12 rendering support added
- Double left mouse click equals item Edit when in 3D
- Light Brightness is measured in Lumens
- Light Temperature is measured in Kelvin
- Pause/Resume commands added to 3D generation
- "Roughness" and "Metalness" added to the material Edit lighting properties. When the material is edited in a PBR mode, the PBR properties are shown instead of the traditional diffuse and specular properties
- PPD Paint Swatches added
- Profiles are continuous when walls are stacked on top of each other or when the wall material extends into the gable end of a roof
- SketchUp export improved
- Skybox Background option added
- Texture on sloped beams follows the slope of the beam
- Time Estimate added — displays the estimated time to complete a 360-degree photo when Ray Tracing is on
- Walk Mode option added. Turned on, the Camera moves at eye level while navigating the model which mimics walking through the house. Turned off, the Camera moves where it is pointed



Area

- @AREA_MODEL# stamps display using the Round Area option
- Color selection added to Create New Area command
- Inside Bearing Edge option added to Reference to Wall
- If two Areas overlap and occupy the same location, Edit allows each area to reference a different location in the wall (Exterior Edge vs Outside Bearing Edge)
- Round Area option defaults to On

Beams

- Beam profile is extracted in section
- Finish option added
- HSS (Hollow Steel Section) Beam Type added
- Edited Beam Projections are not affected by the Cleanup command
- Drawings are prefaced on Beam IDs in a Beam Schedule if the schedule includes all drawings in the model stack and Beam IDs are enabled

Building Options

- 3D Profile items can be drawn directly to a Building Option
- And/Or Boolean type operator logic added
- Assign Building Options command added to the right-click of a Selection Set
- Building Option can be renamed directly from the Edit > Common tab
- Building Options dialog is moveable and dockable

Cabinets

- Additional Painted Cabinet Finishes added
- Countertops print and are shaded by default
- Explode Countertop command added
- Placement of apron (farmer) sinks improved
- Print Pen override added to the Cabinet Run
- Cabinet Schedule fields — new Path and Name fields available. Path field displays the entire path while Name field displays the name only
- Toekicks can be completely disabled from an individual cabinet
- Type Erase — "Plan View Cabinets" now labelled "Cabinets (Plan)"
- Type Erase — "Elevation View Cabinets" now labelled "Cabinets (Elevation)"

Ceilings

- Adding a 45-degree Tray Ceiling easier
- Apply Roof Slope command added to right-click. When selected, the shape of the selected ceiling will automatically match the shape of the roof above
- Beams are located and referenced by Auto Trace Ceiling command
- Joist polygons snap to the inside of a Ring Joist
- Ceiling Options accessible directly from the default Ceiling Mode toolbar
- Strapping extracts in the model displaying in 3D and Section
- Ceiling Trusses have the same controls as Accent Trusses
- Vertical Ceiling edges extract the drywall with a thickness
- Walls under 6' tall, such as those around a stair, will be ignored when placing a Ceiling via Auto Ceiling
- Hole cutting for recessed lights on sloped ceilings improved

Details

- Insulation option added to Joist Detail

Dimensions

- A Dimension number that is moved will stay at the new location on subsequent edits — formerly it would reset to its original location and have to be moved again
- Add Text command added — places text beside or below a "live" Dimension
- Auto Dimension of drawings with angled walls improved
- Dimension Arc dimensions the Radius of a Circle
- Filled Circle Arrow style added for Dimensions & Pointers
- Hovering over the direction arrows will preview the result of the Edit
- Locating items in close proximity to enlarged Dimension Numbers is more intuitive
- Round to Nearest - one foot (1') option added
- Select a Dimension line using Draw Select and the Status bar updates with the Shape Dimension and Symbol Dimension options
- Shape Splines or Solid 3D Splines will no longer be dimensioned
- Set Distance Between reference to countertop added
- Stairs work with the Dimension Point command
- The color of the dimension drawn when using the Set Distance Between function matches the construction color (red) to match other temporary dimensions
- Units option added to allow Metric and Imperial Dimensions to be mixed on the same drawing
- Wall Thickness dimensions are more difficult to inadvertently select
- Wall Thickness Dimensions are placed outside of exterior walls

Distance

- If a Slab is visible in drawing mode, it is available to the Set Distance Between command
- Set Distance Between command ignores wall ends that participate in a join

Decks

- Add Left/Right Handrail option added to Edit Ramp dialog
- Arrow color changed on a ramp to make it easier to see
- Deck Stairs and Rails that sit on or above lower decks will hide the deck lines on the lower decks
- Has Overhang option added to Deck Edge edit
- Joist polygons can snap to the inside of a Ring Joist
- Lighted Post Caps added to library
- Position Rail Align option Inside Ring Joist added
- Position Rail Align option Outside Ring Joist added
- Radius Edge Solid Surface Deck extracts correctly
- Single Deck Ring Joist references exterior side of a wall
- Wood I Joist Type added

Electrical

- Lucas Design fan & lights library added
- PureEdge Lighting library of lights added
- Visible Items added — Wall Exterior Treatment and Wall Interior Treatment
When selected, trim, quoins, & corner boards display making it easier to avoid the trim when placing light switches and outlets

Elevations & Sections

- Annotated Elevations & Sections can display Opening Hinge Direction
- Annotated objects: Roof Pitch, Opening Note and Hinge Direction are added to their own Layer
- Floor System Height dimension option added
- Show View Page Number option added to System/Project/Drawing Options for Elevation/Section Labels

Erase

- If Block Cut is used on a Selection Set, only the items in the Selection Set are modified
- Type Erase — All Items separates and labels items as being assigned to Layers or Building Options
- Type Erase — Ceiling Insulation added
- Type Erase — "Plan View Cabinets" now labelled "Cabinets (Plan)"
- Type Erase — "Elevation View Cabinets" now labelled "Cabinets (Elevation)"
- Type Erase — Visible Items Only option added

Extensions

- Draw Select replicates the Mode, Line Type and Scale of a source Extension
- Extensions can be added to the edge of the leaf portion of a Pocket Door
- Extension Lines placed with the Single Extension command will pull from the closest extendable location rather than use the System/Project/Drawing setting
- Extensions do a better job of remaining attached to wall materials as the walls move in and out of wall joins
- Extensions will not pull from Shape Splines or Solid 3D Splines
- Option added to Cross Section Generation and Elevation Generation to omit the Dimension of the Floor System Height

Finishing Options

- Accent Truss default color added to System/Project Options



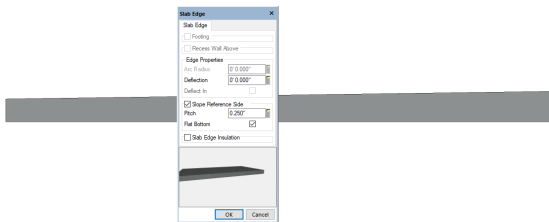
SoftPlan 2022 Detailed Features

File

- Drawing Modes have individual control of File Overlay
- Drawing Templates Location option added to System Options
- Export of SketchUp legacy formats SketchUp 2020, SketchUp 2019, SketchUp 2018, and SketchUp 2017 added for SoftPlan+ subscribers
- Export to REScheck-Web added
- Images are included in DWF file export
- Import results improved when a DWG file has identically named Layers but different visibility settings from the target drawing it's being imported to
- Insert of very large image files improved
- Rotated drawings contained in Plan Sets or Multi Drawings export in the correct orientation
- Search Projects dialog opens when the magnifying glass icon is selected
- The current selection no longer scrolls after an operation is performed in the Navigation Window
- Users without SoftPlan+ subscriptions can alphabetically sort the Projects on the Start Page

Floor System

- Flat Bottom option added to sloped slabs



- Generate Joist Drawing places Joist Hangers on a separate Layer to facilitate Print Pen control
- If Add Drywall is selected on a Floor System Hole, the Wallcovering (paint) from Interior Mode extends down to cover the drywall that surrounds the hole
- If a Slab is visible in Drawing mode it is available to the Set Distance Between command
- Joist polygons Snap to the inside of Ring Joist & Sill Plates

Information Stamps

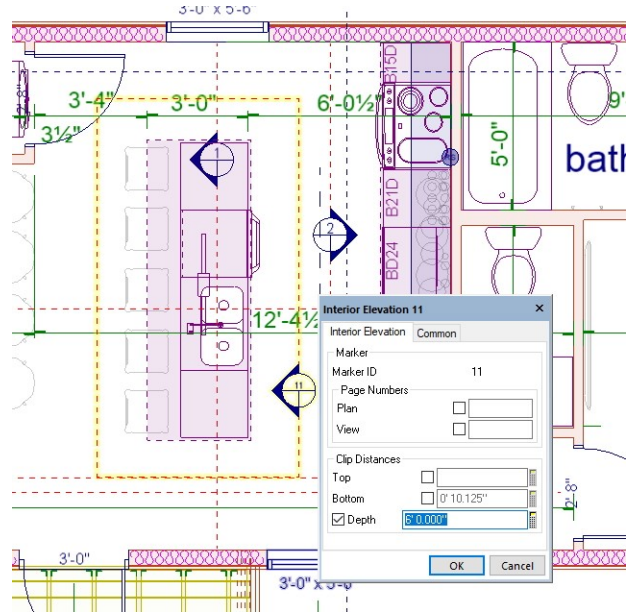
- @AREA_MODEL# stamps display using the Round Area option
- @PLAN_SET_NAME stamp added
- @PROJECT_NOTE stamp supports multiple lines of text
- User Information Defined Stamps added

Model

- Open View command added to right-click of Elevation, Section, Interior Elevation markers

Interior Elevations

- Clip Distance Depth option added



- Editing a cabinet on an Interior Elevation now defaults to the Base Cabinet tab
- Interior Elevation Lines option, separate from Section Lines, added to Visible Items
- Moving a wall adjusts the size of the Interior Elevation
- Open View command added to right-click of an Interior Elevation Marker
- Opening Hinge (Door Swing) display added to Interior Elevations
- Show View Page Number option added to System/Project/Drawing Options for Elevation/Section Labels

Move

- Block Move selection area around Notes reduced
- Block Move added to Plan Sets
- Center in Room command added to right-click when applicable
- Items in a Selection Set can all be rotated by the Make Parallel command
- Move Wall allows selection of the inner & outer most visible lines – previously the trace line was selected
- Room Labels are easier to locate
- Stairs will "bump" into Walls on a Move making placement easier
- Text contained within a Symbol is ignored when centering using the Center in Room or Center Between Edges commands

Layers

- Layers can be renamed directly from the Active Layer menu eliminating the need to access via Options
- Layers dialog is moveable and dockable
- Set Layer command added to the right-click of a Selection Set

SoftPlan 2022 Detailed Features

Miscellaneous

- Active Action added to right mouse click — useful as a tiebreaker when multiple items are located within the locate tolerance
- Adding mathematical calculations to distance entry fields auto scrolls horizontally when the equation moves past the end of the edit box
- Annotated View (Elevations, Sections, Interior Elevations) Zoom speed increased
- Bitmap highlights added to toolbars
- Copy to SoftPlan Clipboard added to right mouse click
- Default Visible Items configuration added to Project Options
- Drawing actions are maintained while switching from one tab to another
- Midpoint of total length of Wall, independent of openings or intersecting walls, added
- Opacity added to all Solids in 2D
- Option added to save Drawing-level Visibility Options "up" to the Project level and Project-level Visibility Options "up" to the System level
- Projection Snap indicates the snap type of the source: triangle, mid point, box, end point...
- Quick Launch search command added
- Rotate Polygon Edge command added
- When entities on a drawing are added to a Selection Set, the Ribbon menu displays all of the commands applicable to the items in the selection set
- Zoom Extent & Workspace — if objects exist outside of the workspace the zoom will extend past the workspace so those objects are displayed

Notes

- Column Totals option added to Schedules
- Double Arrowhead Underline styles added
- Framing Schedule Dimension format defaults can be changed at Project & Drawing levels in addition to the System level
- Highlight added to Note Schedules — the currently selected item in a schedule displays highlighted on the drawing allowing items to be more quickly located
- Keynote Schedule added to Visible Items
- Pointers not hidden by a Note Mask
- Revision Author Field added to Revisions
- Room Finish Schedules — option for Finish column added for Baseboard, Tray, Crown Mold & Chair Rail
- Schedule formatting and names of the title and headers remain unchanged when regenerated
- Word Wrap option added to columns in Schedules

Openings

- Baseboard is continuous when Remove & Fill is enabled for a door
- Barn Door library added
- Corner Face Sliding Door type added



- Diamond & Diamond Offset Grille styles added
- Extensions can be added to the edge of the leaf portion of a Pocket Door
- Grille placement of radius top windows improved
- Header Type Steel I added
- Marvin Essential & Elevate Series windows added
- Opening IDs properly increment when some Openings in a project have their IDs disabled
- Opening IDs can be assigned to Gable Vents
- Windows with Grilles in the top only will form properly if the thickness has been increased to 1" or more
- Opening Header Type column added to Opening Schedules
- Opening Search is enhanced to return openings that match user-selected criteria such as size and style or all openings with the same rough opening
- Openings can be placed to span between two walls such as a window with its bottom at the top of one wall and its top in the bottom of a wall directly above it (coplanar) (e.g., a window at a landing in a stairwell)
- Pediment centers over the opening in the wall when added to a Pocket Door
- Pocket Doors center on the opening hole, not the entire Pocket Door
- Round and radiused Opening Trim improved so that it no longer appears segmented
- Show Casement Swing option added to Material Dimensions > Opening Options dialog
- Shutter Height field added — allows the height of the shutter to be different than the height of the window
- Single Panel doors added
- Sliding Doors overlap the individual sections
- Sliding Shower Door library added to Interior Openings
- The swing on a reversed unit or a single opening with a non-prehung door reverses correctly
- Units display Hinge side when the Elevation column is included in an Opening Schedule
- Window Schedule and Door Schedule commands added. Window and Door Schedules can be generated separately from each other

SoftPlan 2022 Detailed Features

Paint

- Adjacent Paint of the same pattern align vertically and horizontally
- Improved ability to Paint complicated areas
- 6" vertical & 6" horizontal siding patterns added

Posts

- Draw Brace command added — places a 45-degree framing member at the specified location
- Helical Pile added
- Pressure Treated Post - No Inset posts added — the wood post sits on top of rather than formed into the concrete footing
- Structural Posts default Footing Depth set to 12"

Plan Sets

- 1" = 1' default Scale added
- Adjust Crop View command added
- Align With Another Drawing command added to the right-click
- Annotated Views on a Plan Set page relocate both the model and the annotations
- ARCH E1 added to default sheet size list
- Block Move added to Plan Sets
- Center on Page command added to right-click
- Close All command added
- Copy option available when adding a new page to a Plan Set
- Crop View works on rotated Plan Sets
- Draw Crop View as a Polygon command added
- Drawings can be copied on an existing Plan Set page
- Edit and Add Page controls added to the Plan Set section of the Navigation Window
- Export Pages Individually option added to Plan Set PDF Export
- Floating Toolbar on a Plan Set Page can be customized
- Option added to automatically divide the page to aid in adding 1,2,3 or 4 Drawings to a Plan Set Page
- Image files and PDF files can be added directly to Plan Sets via Drag and Drop
- Labels can be automatically added when 3D View Files are placed on a Plan Set sheet
- Multiple Image files can be added at once via Drag and Drop
- Open All command added
- Performance improved when moving Site Plans with large numbers of Shot Points on a Plan Set
- Regenerate All on Page command added to the right click of an existing View
- Renaming a Plan Set while the Plans Set is open functions properly
- Reset Crop View command added
- Use of Invalid Characters is prevented in the Plan Set name in the Add Plan Set dialog

Print

- Countertops print and are shaded by default
- Portrait or Landscape option added for each drawing in the batch
- STL file export added — used by 3D printers

Railings

- Adjust can select Railing Post corners and mid points
- Bottom Post on Stair Position options: As Drawn, Floor and Bottom available
- Bottom Post For Stair Rail options moved from Finishing Options > Railing Options to Material Dimensions > Railing Options
- Each segment of a Railing has independent control over the presence of the toerail — formerly railing sections would have to be drawn separately
- Gooseneck transitions added
- Grabrails added to the default deck railing definitions
- Grabrail part type added to the railing definition. Railings with Grabrails as part of the definition can include/exclude the definition per railing section
- Half Post not added by default when drawing a rail that ends at an existing post (column)
- Handrail and Guardrail are separate entries on the Draw Menu for both Decks and Stairs
- Position option for the placement of the Bottom Post added to the Railing edit
- Multiple component assemblies can be used to create Handrails and Toerails
- Options added to Railing Options to control presence and spacing (Max Post Spacing) of Mid Posts by default
- Post Height options added — As Defined: value comes from the Railing Definition; Under Handrail: automatically adjusts height so the Handrail extends over the Post; Custom: user override
- Post Style "Two Posts" added — used on outside corners when the posts are fastened to the outside of the Ring Joist
- Posts are edited directly. To change a Post's properties, select the Post itself for editing, or in the case of No Post, the end of the Rail
- Rail Alignment option added to Railing Definition — this allows the user to specify a default rail alignment, offset and direction
- Railing placement & adjustment on angled Deck Stairs improved
- Railing part Frame added
- Railing Posts can be linked to a Symbol
- Spindles can be linked to 3D models
- Spindle library added — contains 3D symbols
- Vertical Spindles — separate Width and Thickness values added allowing boards to be used as Spindles
- Wall Return option added to the end of Railings

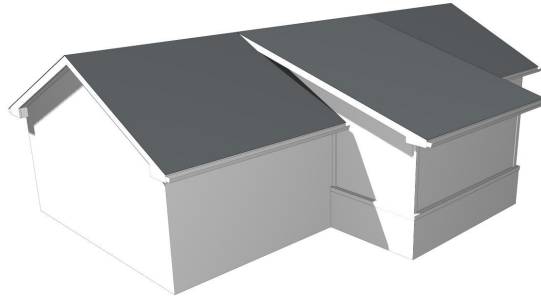
SoftPlan 2022 Detailed Features

Roof

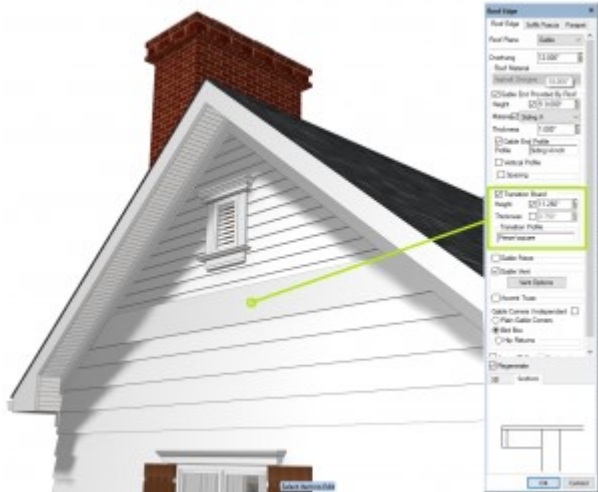
- Angled walls — Fit to Roof command improved
- Apply Valley Gable command added — the roof forms a valley at a corner between two gables
- Bird Box improved on Gable Ends where Fascia Boards are different depths on gable end vs. hip side
- Compass Direction is factored in when determining the solar panel optimal facing
- Fascias on very low sloped roofs improved
- Fascias on Dormers with a radius roof improved
- Gable Corners default style settings added
- Gable End construction when referencing Walls that are different heights improved
- Gable End option Transition Board added — use to place a Frieze-like transition board between the top of the wall and the bottom of the gable



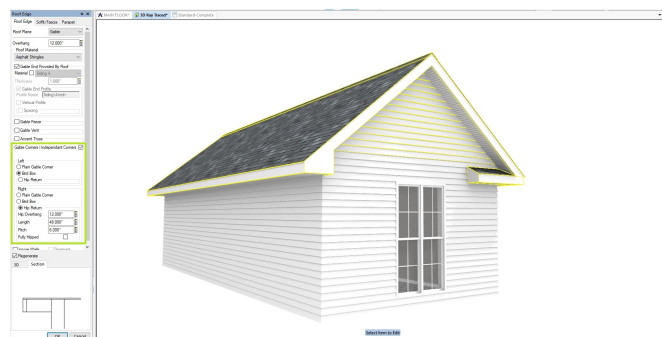
- Match Roof Ridge command added — adjusts the slope of one roof so it intersects the ridge of another roof



- Radiused Roof Holes extract properly in 3D Model
- Raked Fascias with Shadow Boards improved; more noticeable as the side of the Shadow Board increases
- Rounding on roofs with very shallow Roof Pitches improved
- Sills can be added to Roof Vents
- Shed Roof Shadow Boards on the high side properly form corners
- Soffit and Fascia options added to the Gable section of a Dutch Gable independent of the Hip section
- Soffit Offset option added to move the bottom of the Soffit above the bottom of the Fascia by the specified distance
- The size of the font on the automatically generated Roof Pitch indicators is controlled via the Dimension character setup



- Gutters can be added to Roof Edges that have Shadow Boards
- If the gable end material is set to a profile, the soffit will extend to the inside on the material
- Independent Gable Corners command added — allows the end style of a Gable Roof to be set differently on one side versus the other
- Intersecting Gable Roofs improved
- Multi-Floor Shed Roofs automatically set the high side roof edge to vertical and intersect
- Overlays no longer shared with Multiple Floor Roofs eliminating any roof cleanups required after working in other modes
- Parapet Roof tools added. The Parapet Walls are automatically placed on top of the Roof surface inline with the Walls below



- Vent Count option added to the Roof Edge edit
- When the Soffit is Raked, the Frieze Board is moved up to the wall fascia intersection

review

- Extents and Page Size fields added to the Import PDF Shapes dialog. These provide information to aid in selecting the appropriate scale when importing the PDF
- Improved quality when a PDF contains a cropped view of a drawing that contains an image
- Portrait or Landscape option added for each drawing in the batch
- Text on a Layer that is set to Fade will Print faded
- Watermark option added to PDF export

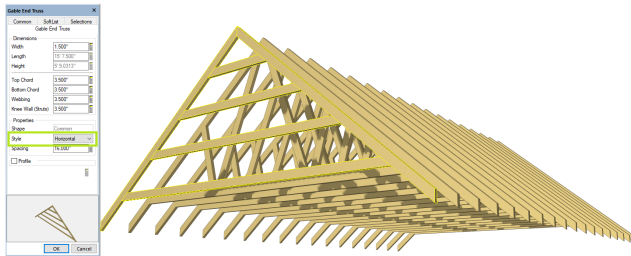
SoftPlan 2022 Detailed Features

Roof Framing

- Accent Truss Bottom Deflection option added



- Accent Truss King Post Projection option added
- Auto Stick Frame command adds framing members to the Hip Return portion of a gable roof
- No Tails added to Top Chord Style option
- Horizontal style option added to Gable End Truss



- Roof Holes cut roofs framed with Purlins
- Roofs with Holes properly frame with staggered rafters
- Stick Framing of stacked bullnose improved

Site

- Edit Color setting is on the Site Object tab instead of the Site Line tab
- Edit of a radiused Site Line displays the length on the arc
- Large Site Plans with Grade Lines extract faster to 3D
- Rotate to Ortho command added
- Site Poly changes duplicate with Repeat Edit
- Size option added to Geo-location Point
- Vegetation command added — used to cover areas with multiple occurrences of symbols (e.g., grass for lawns or trees for wooded areas)

Stairs

- Default Railing Types added for each Stair Type — Options > Material Dimensions > Stair Options
- Duplicating or Draw Selecting a stair no longer adds railings or reverses the stair
- Stairs will "bump" into Walls on a Move making placement easier
- The Dimension Between command has access to the Stair lines in an overlay file

SoftList

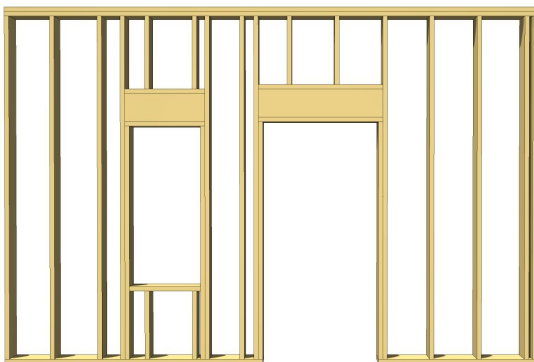
- A SoftList report exported to Excel (*.xlsx) opens correctly in Google Sheets
- Board Type check box controls added to the Group Deck material dialog for decking board component
- Beam ID value can be listed on a SoftList Report
- Copy Existing command added when creating a new Lumber Table
- Crown Mold quantity on a raked wall corrected
- Cut List Customize Lumber Lengths option added to each Material
- *deck_board_type* variable added
- *decking_board* & *parting_board* constants added
- Deck Constants Builtup and Wood removed
- Deck Toerail Group recognizes the selected profile Library
- Grid Lines added to the Report Layout
- Groups that are collapsible added to Material Configuration — this simplifies managing the large list of materials
- If there are no errors, the Error Window will not display
- *joist_spacing* variable added to Floor, Ceiling and Landing joist groups
- Page Breaks can be inserted into Reports
- Report changes display in the Output Window
- Room location of a material can be listed on the SoftList Report
- Two decimal point accuracy added to Excel Export of fields that contain percentages
- SoftList Configuration is a single dialog — combines the settings for Symbol Libraries, Cabinet Libraries, Lumber Tables, Help, External Price Tables, and Library Categories
- SoftList Reports added to a Plan Set page automatically regenerate as the assembled drawings in the model change
- Symbols added to Highlight Entities command
- Symbol ID changes made to the Symbols in the System Library update the Symbols contained in existing drawings
- Undo & Redo commands added to editing of saved reports
- Variables *material_profile*, *profile_spacing* & *vertical_profile* added
- *.xlsx files (Excel) added as a source for External Price Tables

Symbols

- The Draw Symbol dialog opens in the same spot it was last closed within a drawing session
- 2D Residential Elevator symbols added
- Move To Top and Remove From Top (if the symbol had previously been moved to the top) options added to the right-click of a Symbol on the Draw Symbol dialog
- Rock library and Symbols added
- A symbol can be redefined replacing the existing instances with the revised definition

Wall Framing

- 3D Framing Visible Line view can be saved as a SoftPlan Drawing
- Add Plate Above Header option added



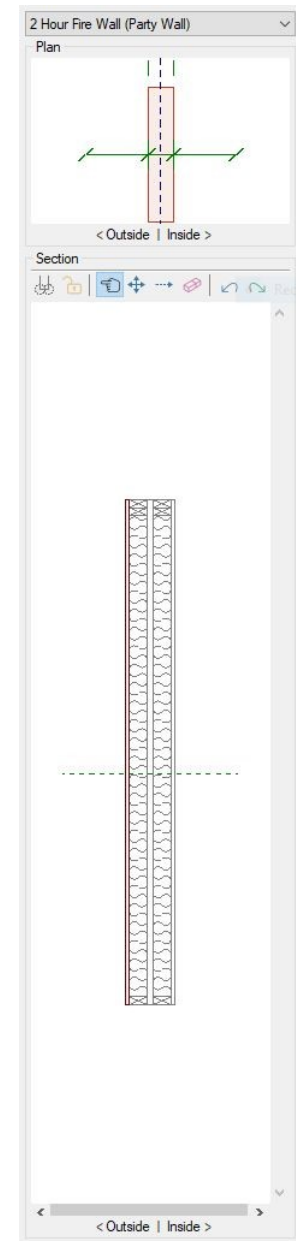
- Add Stud on Flat command added — places a new Stud parallel to the wall



- Extend Jack Above Header option added
- Framing is added over the opening if there is no header
- Lines (edges) between coplanar framing members display
- Opening Header type Steel I added
- Steel Studs extract as "C" sections in Framing Mode and 3D Framing
- Wall Panel drawings generate and print shaded making it easier to read
- Wall Strapping is extracted in 3D Framing Views

Walls

- 2 Hour Fire Wall (Part Wall) type added to default Extended Wall list
- Adjust Wall Surface to Cover Floor command improved
- Auto Dimension of drawings with angled walls improved
- Continuous Footing is added between Wall Footings and Post Footings
- Graphic User Interface added to Wall Definitions setup
- Top of Wall & Bottom of Wall options tabs added. These are used to manipulate a single wall to have multiple heights, steps, slopes and offsets
- Corner Boards extend to meet the Soffit by default when applied to a gable wall under a shed roof
- Cover Floor options added when a Wall is placed on top of a Deck — used in screened porch applications
- If the outside material of the old wall and the new wall have a matching join group (siding A to siding A or Siding B) when using the Change Wall command, the End Treatment will remain and not be reset
- Outside Corner Only option added to Material Dimensions > Trim Options
- Stud-LVL material added
- Wall Definition dialog sizing improved on UHD Monitors
- Wall Definition — if a material is changed to another material of a similar type, the values for Inside Visible, Inside Pen, Inside Color, Outside Visible, Outside Pen, Outside Color, Texture & Shading Pen, Texture Color, Shading Color and Linestyle will not change
- Wall Joins improved
- Wall material HSS, hollow steel section, added
- Stone - Faux material added
- Wall materials retain their Fixed setting after a Wall Definition is Exported and then Imported
- Safeguards put in to protect Wall Definitions as they are introduced into a drawing via Merge or Copy/Paste.
- Visible Properties filter added — makes it easier to isolate a specific property for editing
- Wall Definition plan preview added to and Drawing Options menus



SoftPlan+ cloud drive and services



SoftPlan+ is a subscription-based service that offers complimentary upgrades, enhanced technical support, access to exclusive content, the complete training library, and the SoftPlan+ online cloud drive that makes sharing projects across multiple locations easier.

Cloud Sharing

SoftPlan+ saves the most recent copies of projects to the SoftPlan+ cloud drive. With a SoftPlan key and a high-speed internet connection, a different system installed with SoftPlan can continue work on a shared project.

SoftPlan reView extensions also allow documents to be published for customer viewing, including 2D vector drawings and rendered panoramic views. Customers can also make notes on the vector drawings and any changes appear automatically the next time the project is opened.

Current SoftPlan Version

Never pay for an upgrade again. SoftPlan+ subscribers have no-cost access to the latest version SoftPlan has to offer.

Toll Free Technical Support Number

Reach SoftPlan's technical support team with the SoftPlan+ toll free number to receive personalized assistance.

Integrated Support Tickets

SoftPlan+ includes the ability to submit support tickets directly through the SoftPlan+ interface. SoftPlan support staff can review a project's files and provide the appropriate feedback to address the issue.

Command and Control Support

With permission, SoftPlan+ support technicians have the ability to take control of a SoftPlan+ subscriber's computer for advanced assistance.

*Command and control support sessions are initiated at the discretion of the technician.
All SoftPlan+ features require a high-speed internet connection.*



SoftPlan+ cloud drive and services

Customer Interaction

Always keep customers up to date by publishing 2D plans and 3D models that they can view from a PC, android, or iOS device of their choice.

reView

All reView functionality is available through SoftPlan+ including the authoring of reView & PDF files.



Panorama Views

Automatically generate panoramic views from predefined points to create a fully immersive 3D experience on PC, iPad, iPhone, or android devices.

iOS and android Support

Using a free viewer app, recipients of published SoftPlan files can mark up and add notes to 2D drawings or take virtual tours of a house in full, panoramic 3D, all from the convenience of their iOS or android device.

Online Training Content

SoftPlan+ provides full online access to the complete training library with over 160 step-by-step tutorials. New content that is added to the training library becomes immediately available to SoftPlan+ subscribers.

360° Photo on Facebook and Web Pages

A SoftPlan+ subscription offers the ability to generate 360° photos within the 3D model and publish them directly to a Facebook page or website.

360° photos are interactive images that can be panned and explored by anyone viewing them.

Premium Content

SoftPlan+ subscribers have access to additional content that is stored on the SoftPlan+ cloud server. SoftPlan may augment these offerings at any time.

Enhanced Libraries

SoftPlan+ symbol libraries include new libraries of Kitchen Accessories, Beds, Stools, Lights, Office Furniture, Range Hoods, Chaise Interior Décor, Tables, Dressers, Wardrobes, Entertainment Consoles, Credenzas, Sectionals, Benches, Ottomans, Vehicles, Bathroom Furniture, and much more.

Enhanced Textures

SoftPlan+ texture libraries include enhanced entries and manufacturer offerings including some from the manufacturers listed below.

Product names, logos, brands and other trademarks referred to within SoftPlan Systems, Inc.'s products, services and within this brochure are the property of their respective trademark holders.



BRIZO



JENN-AIR

Trex

caesarstone



wayfair

Miele

AVONITE
SURFACES

WOLF

Room&Board

SoftPlan Systems, Inc.
8118 Isabella Lane
Brentwood, TN 37027

800-248-0164
email: sales@softplan.com
www.softplan.com

